



STAMP: Scalable Task- And Model-agnostic Collaborative Perception

ICLR 2025

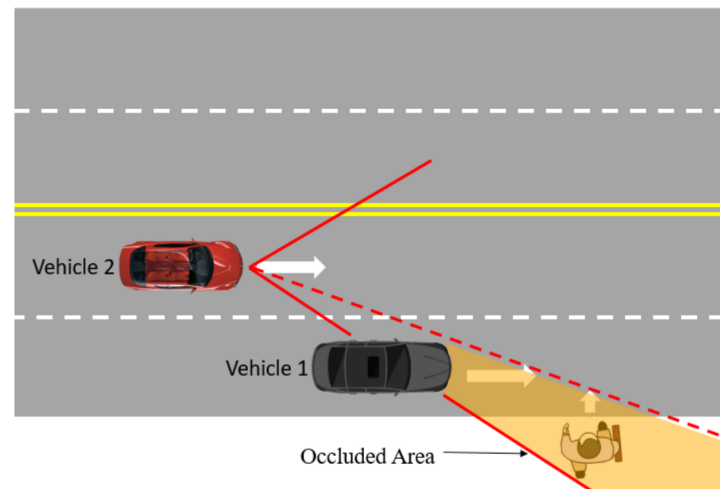
Xiangbo Gao¹, Runsheng Xu², Jiachen Li³, Ziran Wang⁴, Zhiwen Fan⁵, Zhengzhong Tu^{1,*}

¹Texas A&M University ²UCLA ³UC Riverside

⁴Purdue University ⁵UT Austin

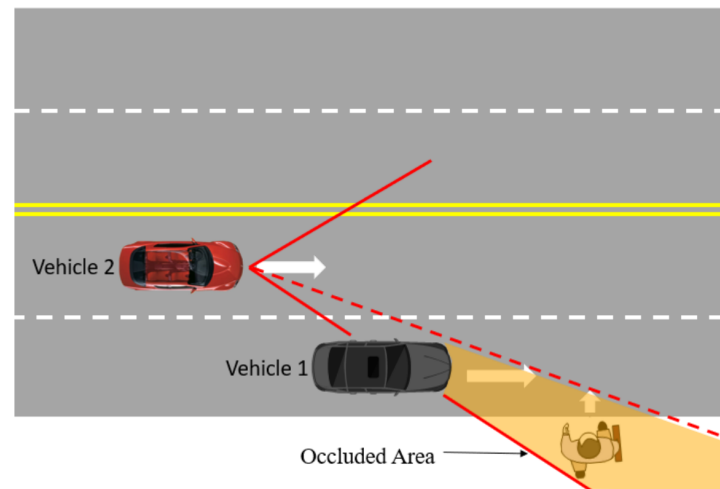


Limitation of Single Agent Perception



Object Occlusion [1]

Limitation of Single Agent Perception

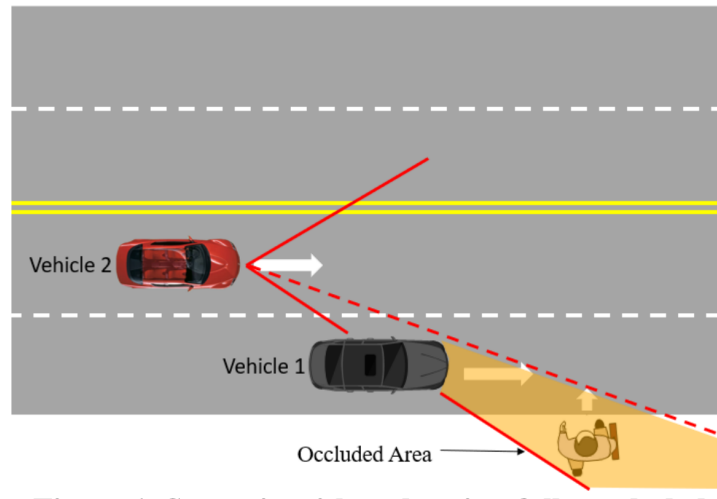


Object Occlusion [1]



Sensor limitation

Limitation of Single Agent Perception



Object Occlusion [1]



Sensor limitation



Severe Weather

Multi-agent Collaborative Perception

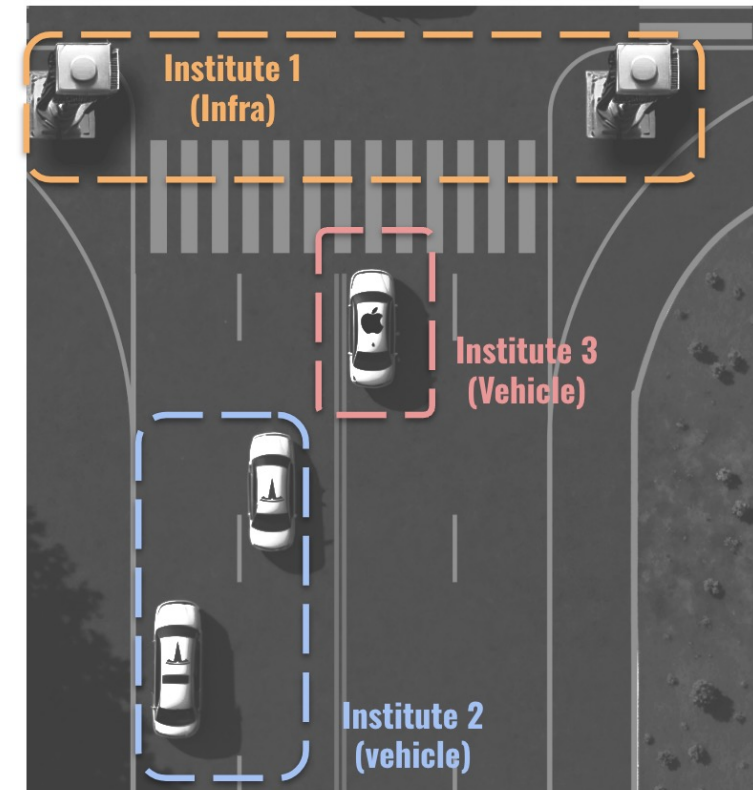


Multi-agent Collaborative Perception [2]

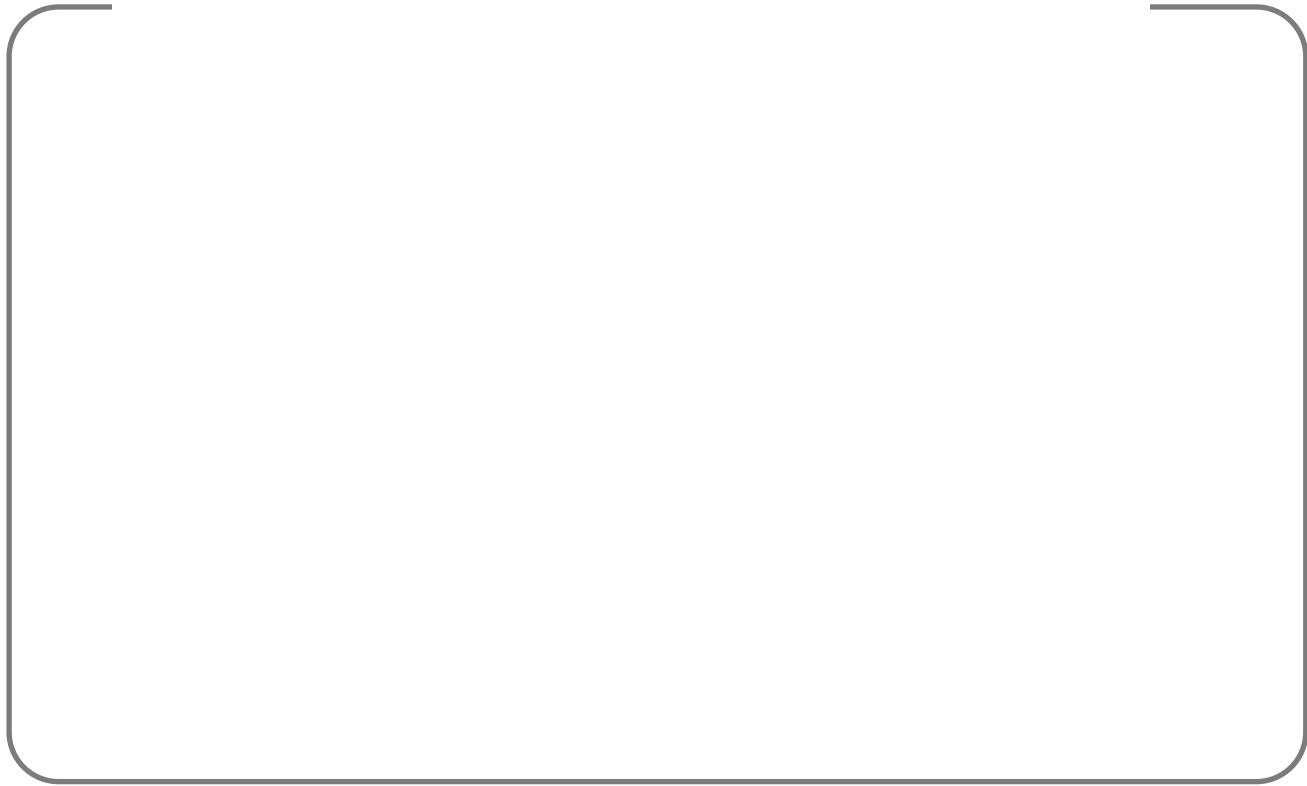
Multi-agent Collaborative Perception

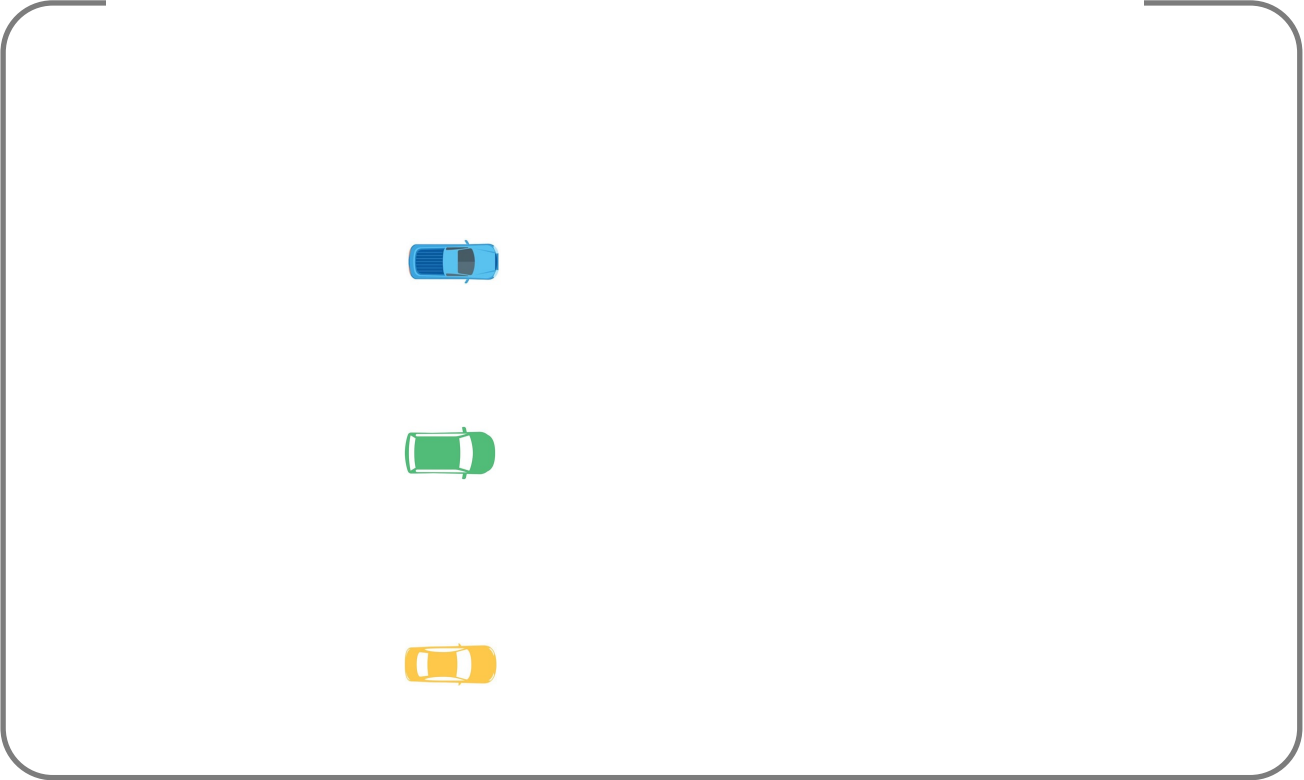


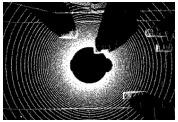
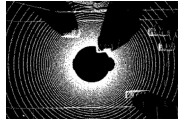
Multi-agent Collaborative Perception [2]

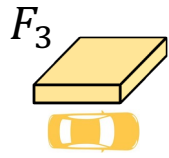
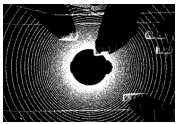
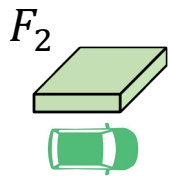
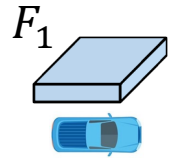
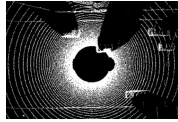


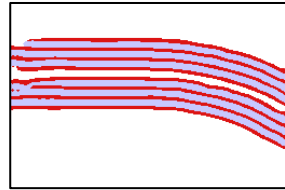
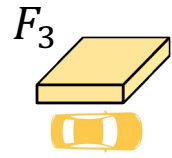
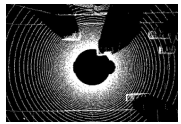
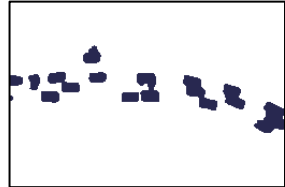
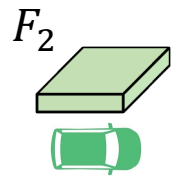
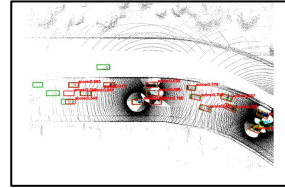
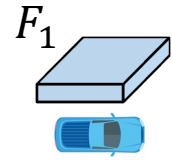
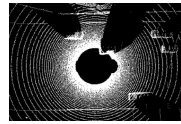
Agent Heterogeneity

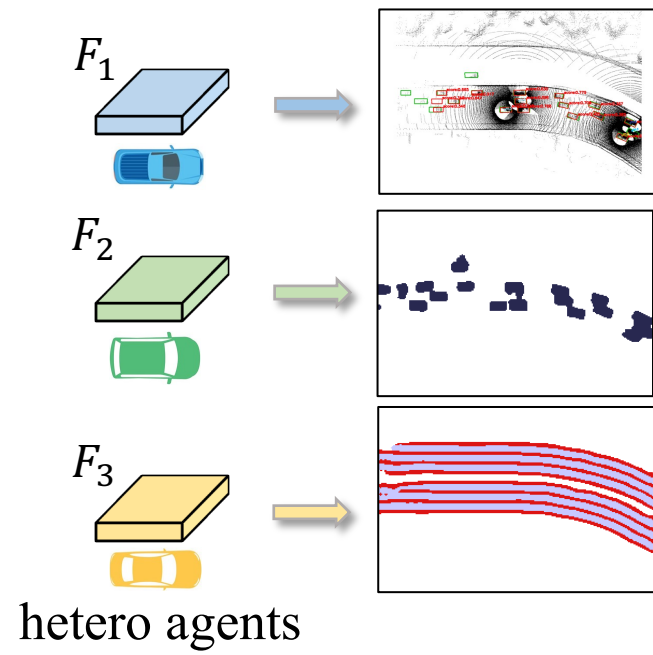






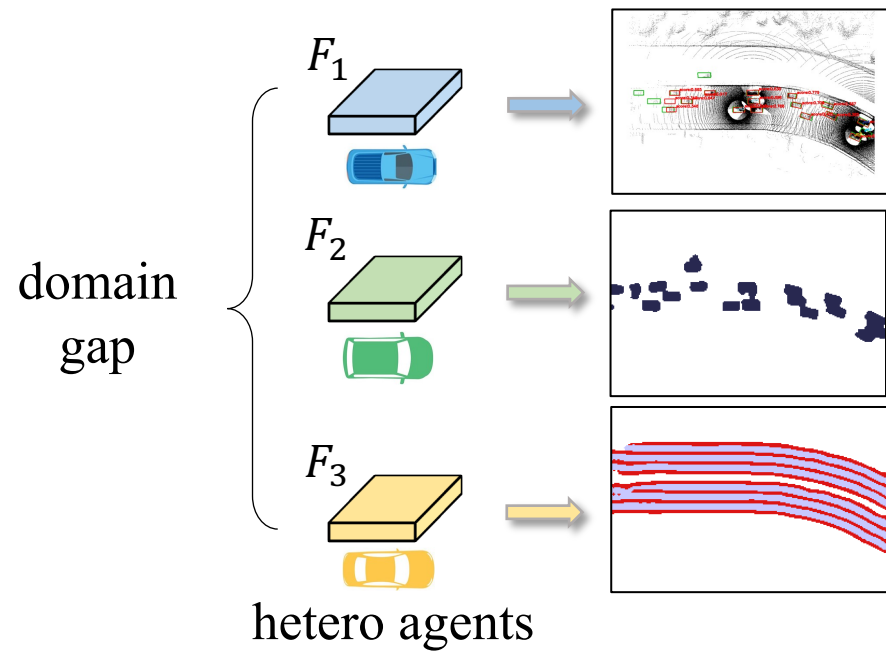






Heterogeneous in input modalities, model architectures, downstream tasks, etc.

(I) Before **CFA** (Non-collaborative)

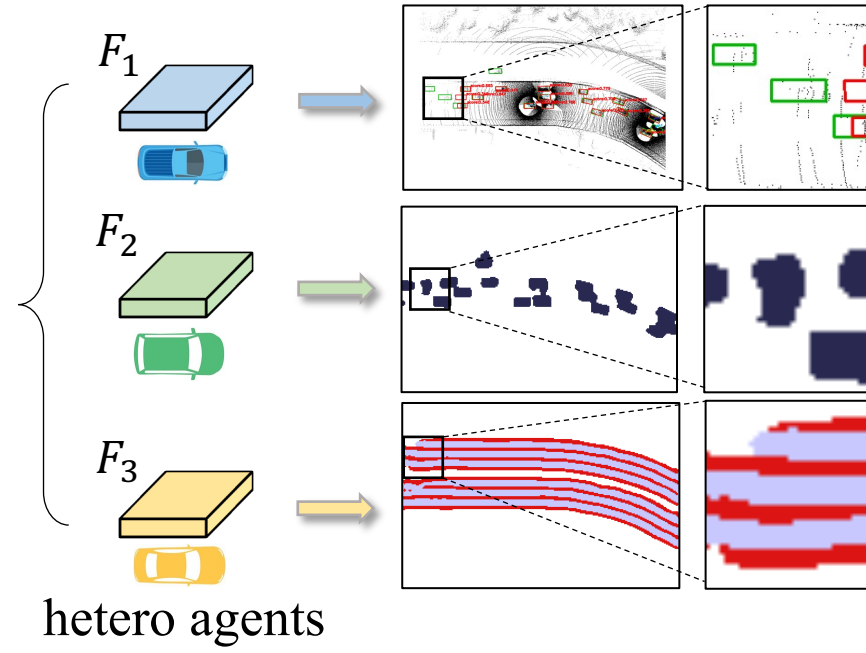


Heterogeneous in input modalities, model architectures, downstream tasks, etc.

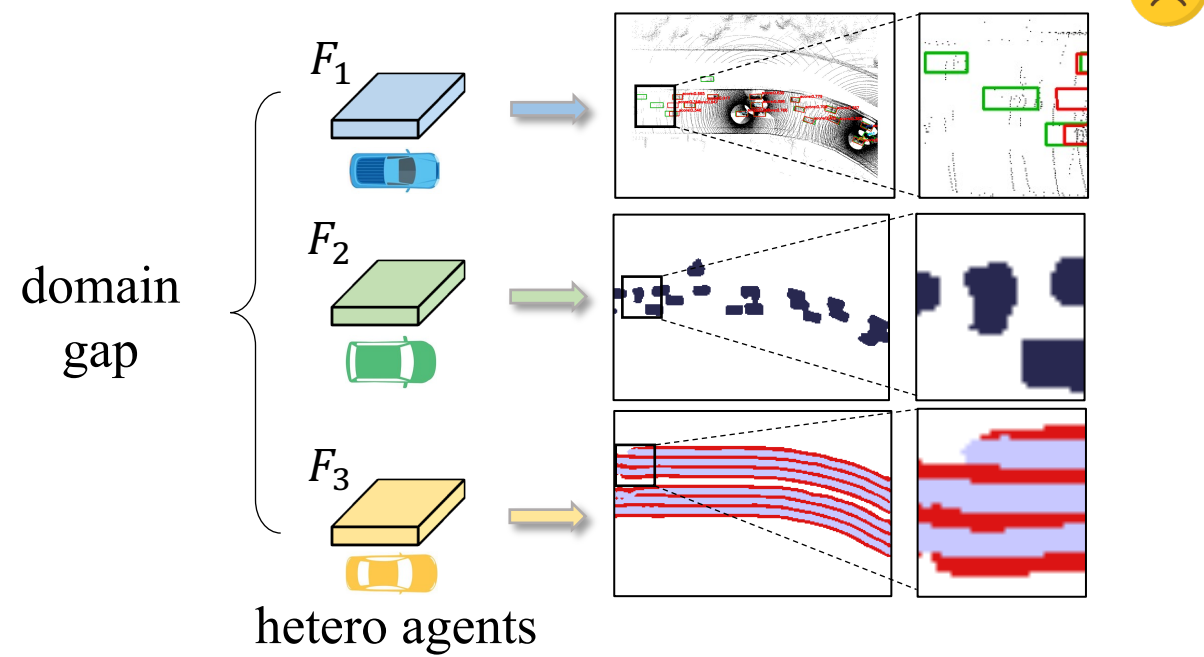
(I) Before **CFA** (Non-collaborative)



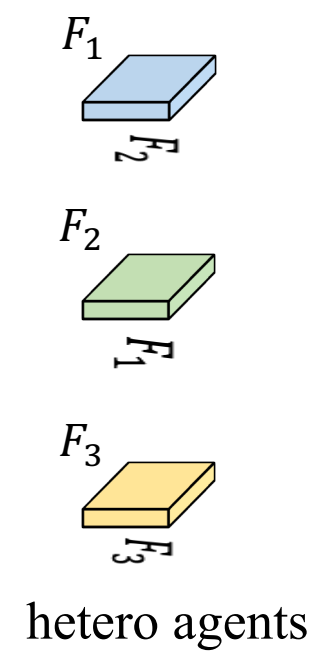
domain
gap



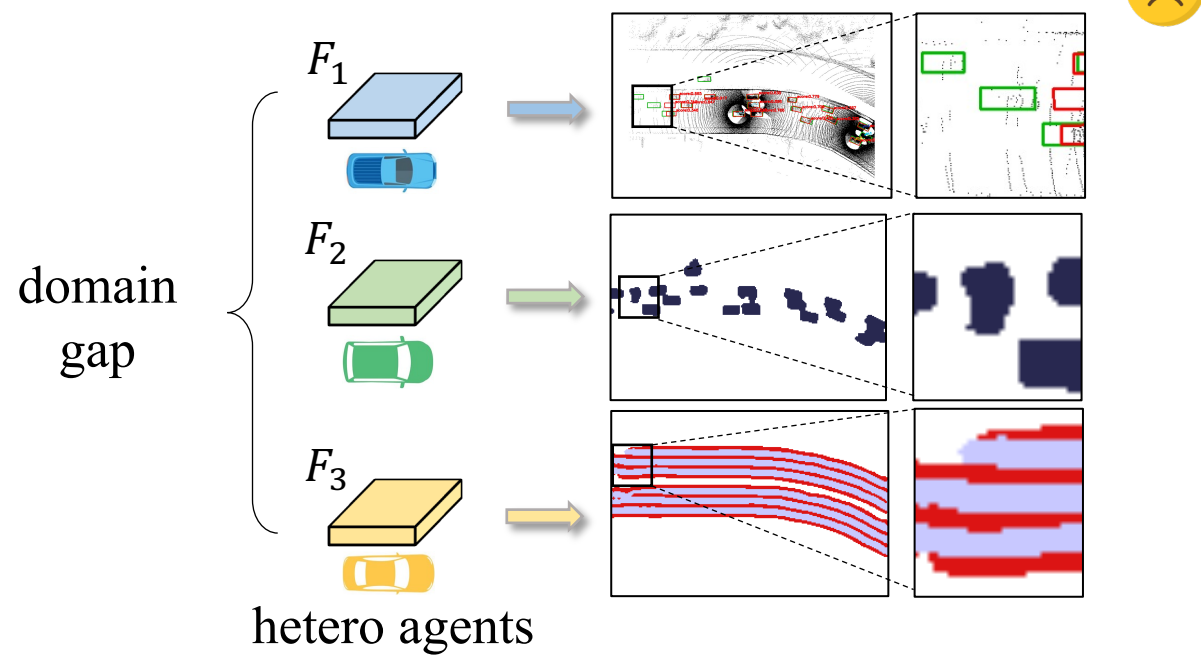
(I) Before **CFA** (Non-collaborative)



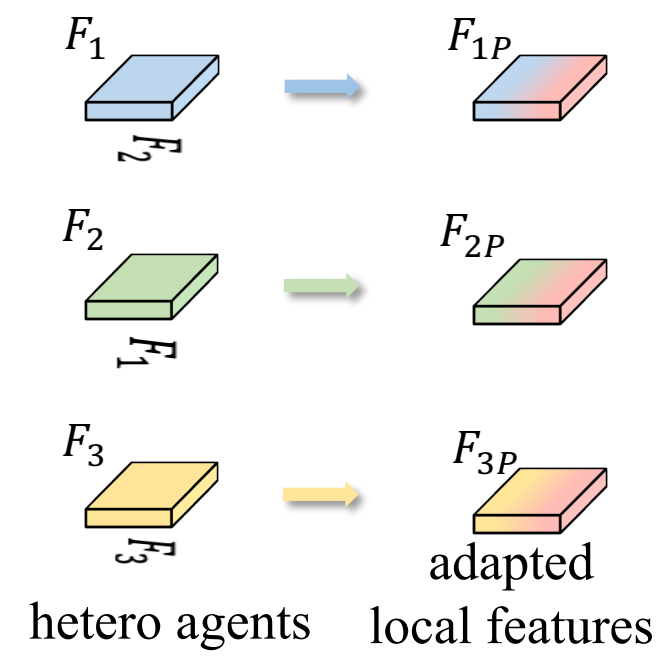
(III) After **CFA** (heterogeneously collaborative)



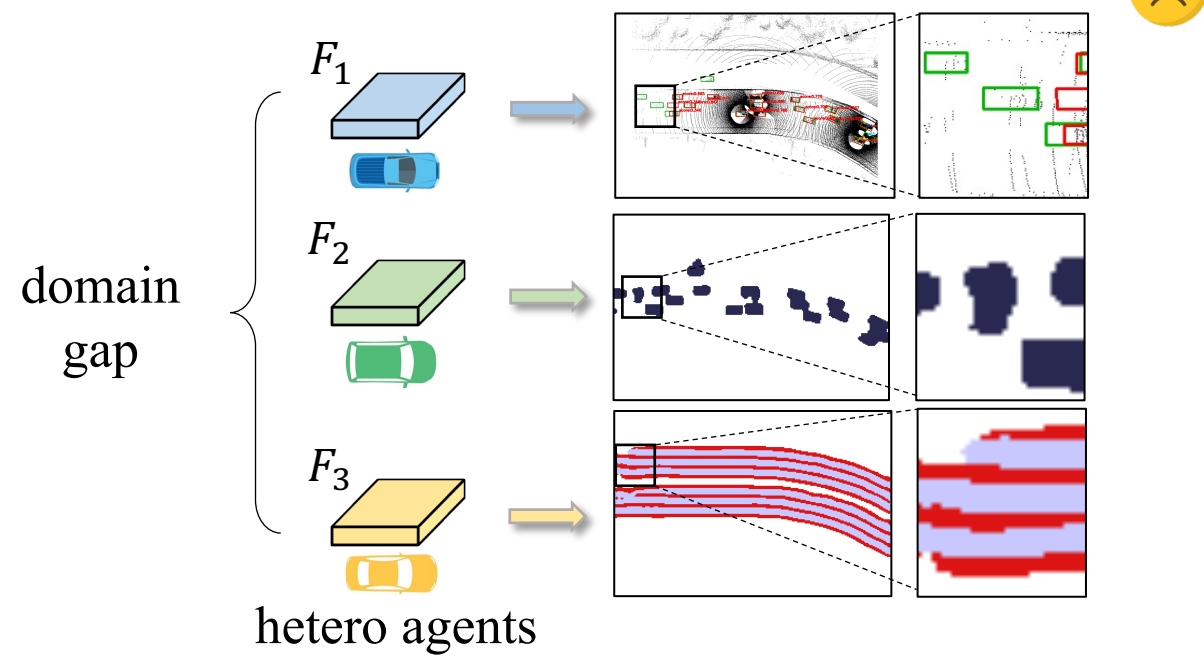
(I) Before **CFA** (Non-collaborative)



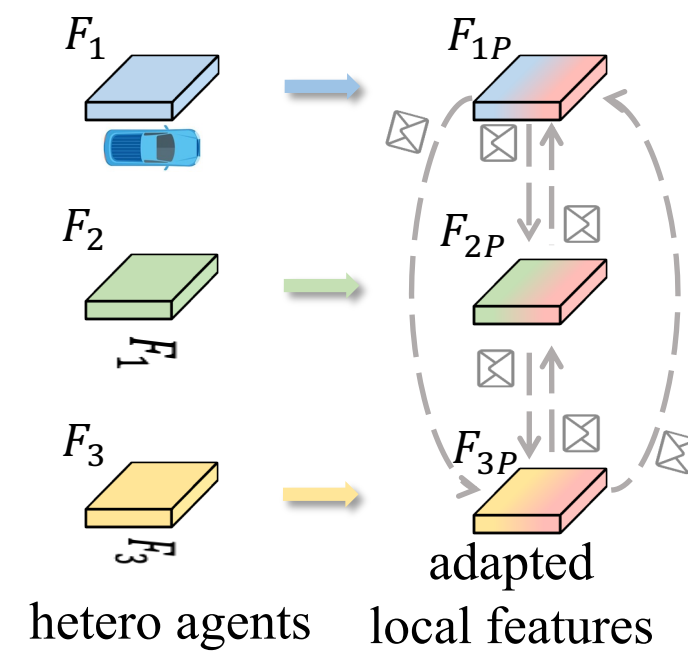
(III) After **CFA** (heterogeneously collaborative)



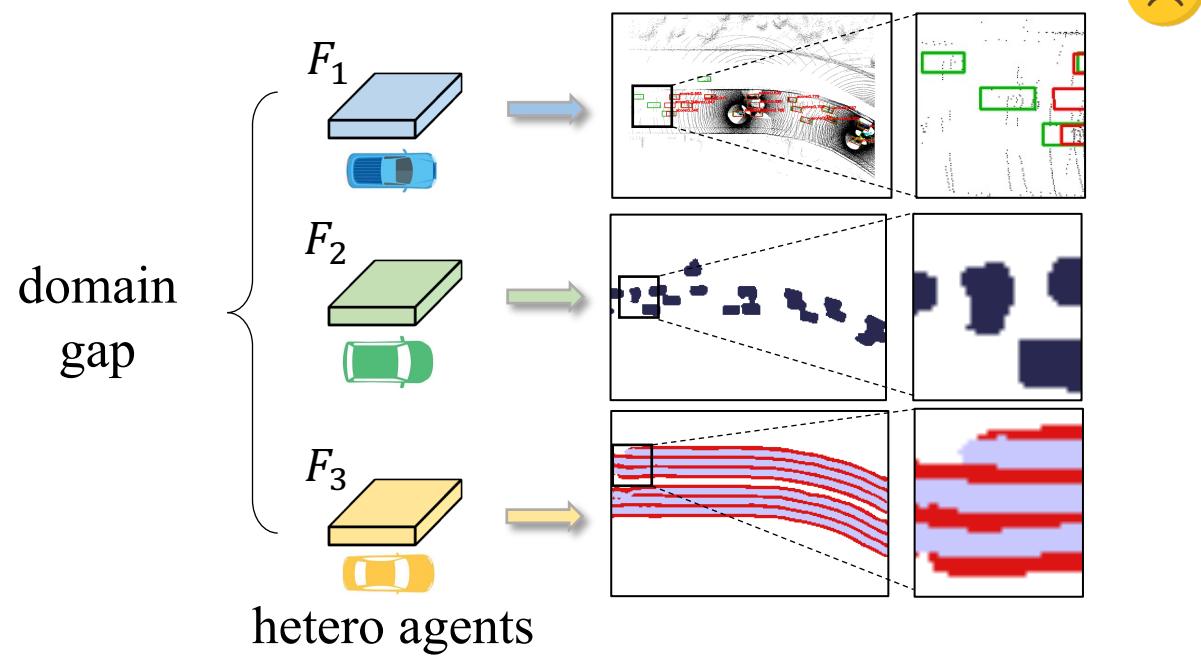
(I) Before **CFA** (Non-collaborative)



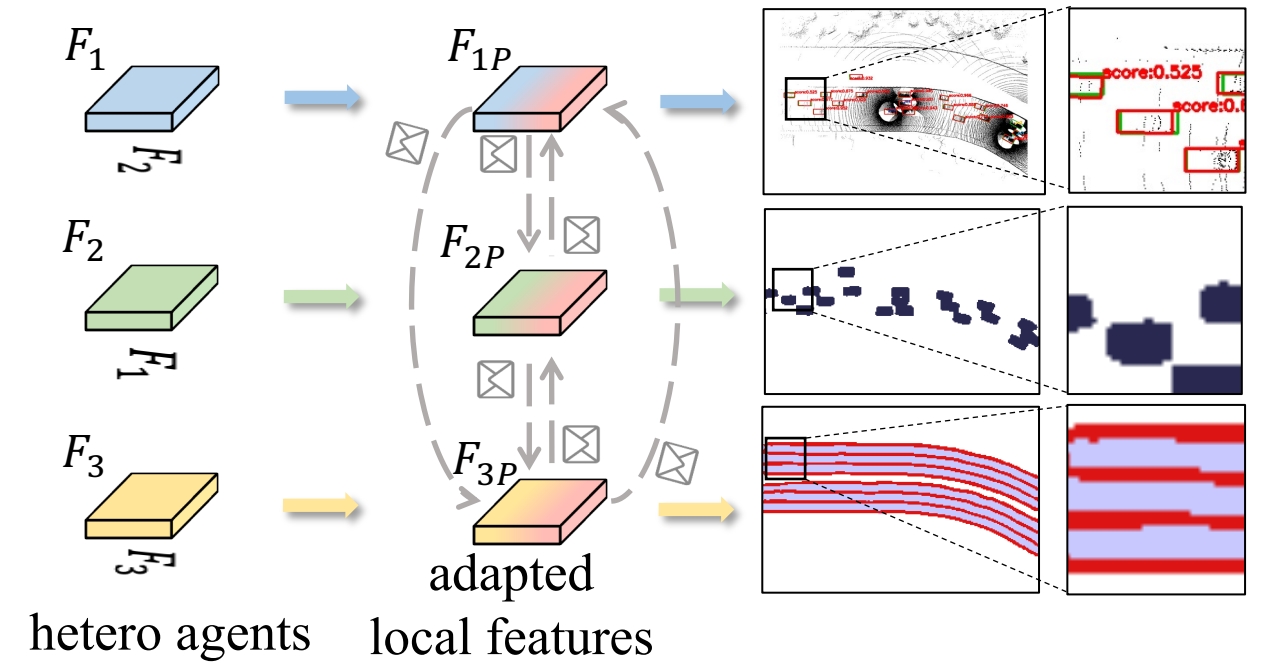
(III) After **CFA** (heterogeneously collaborative)



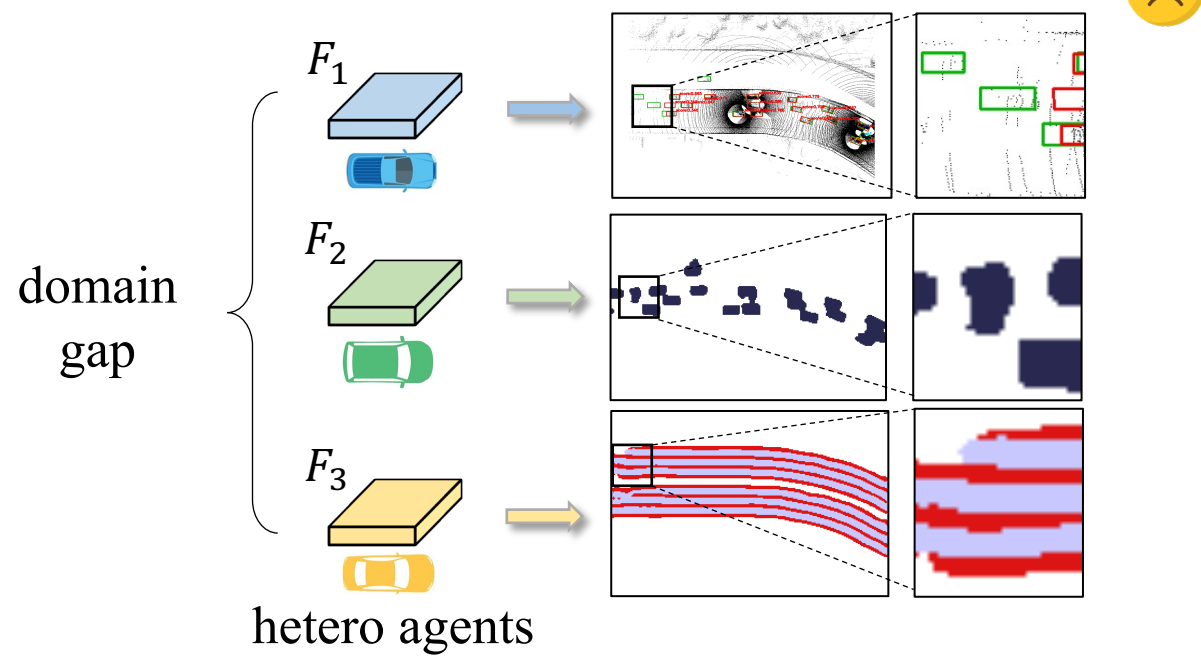
(I) Before CFA (Non-collaborative)



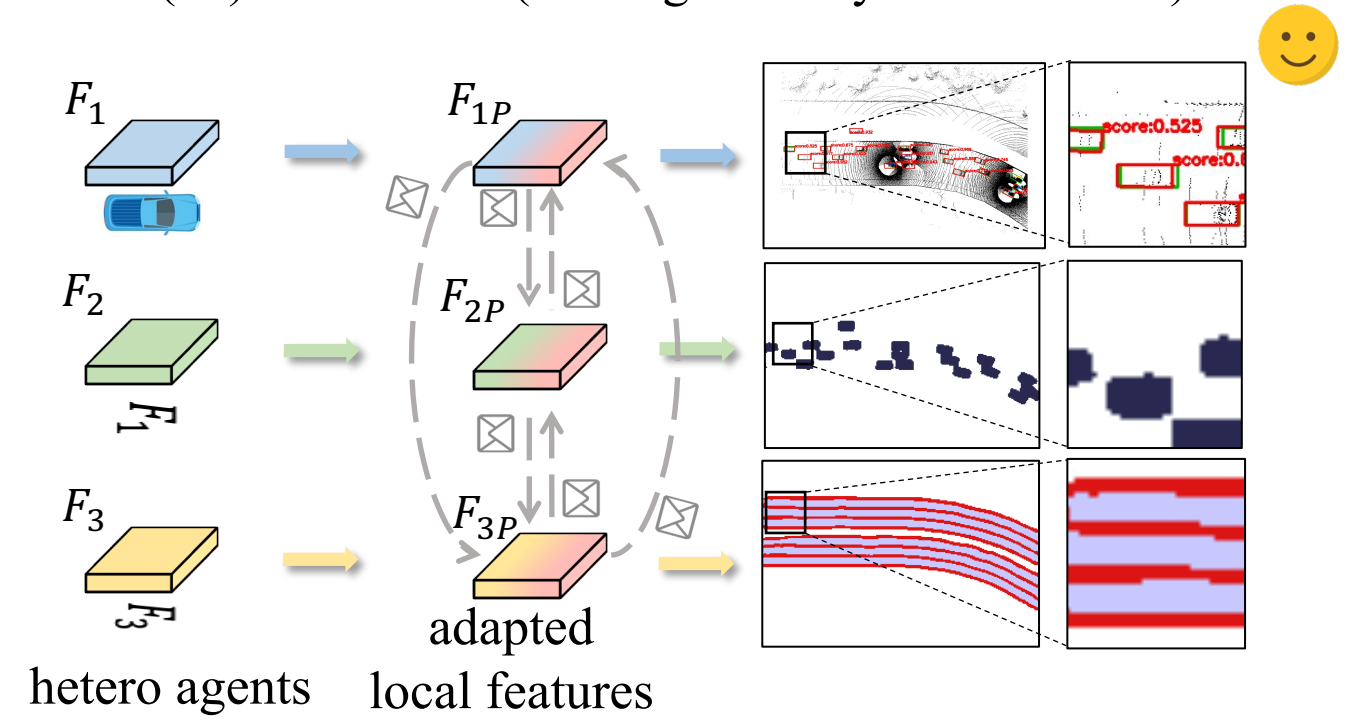
(III) After CFA (heterogeneously collaborative)



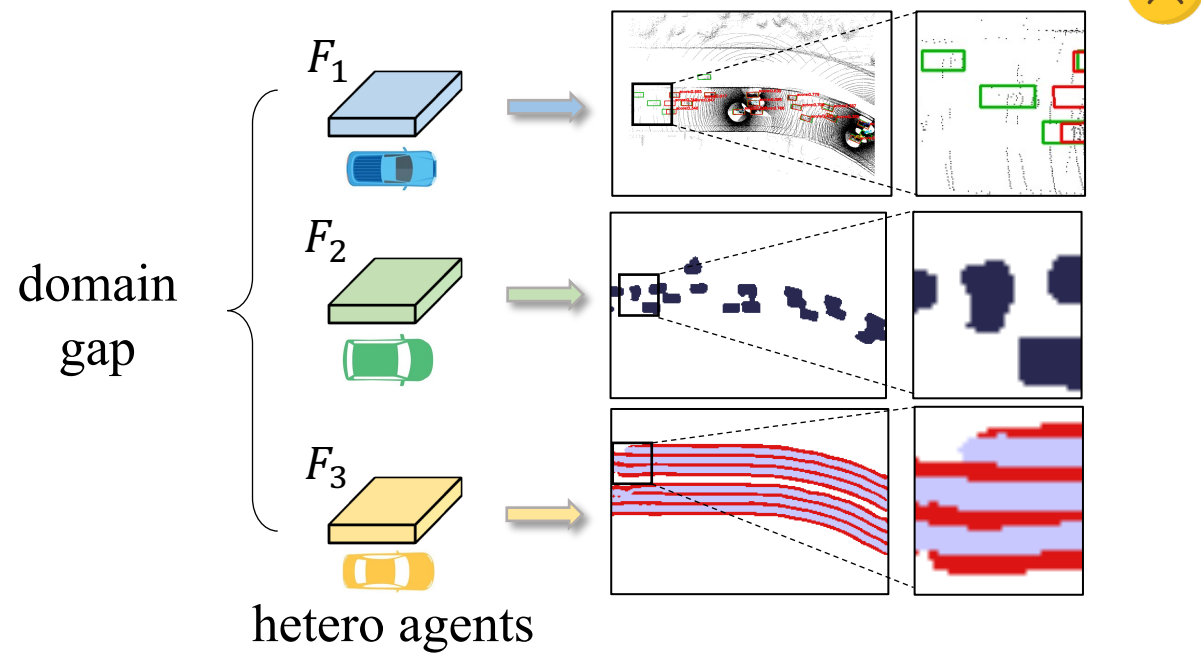
(I) Before CFA (Non-collaborative)



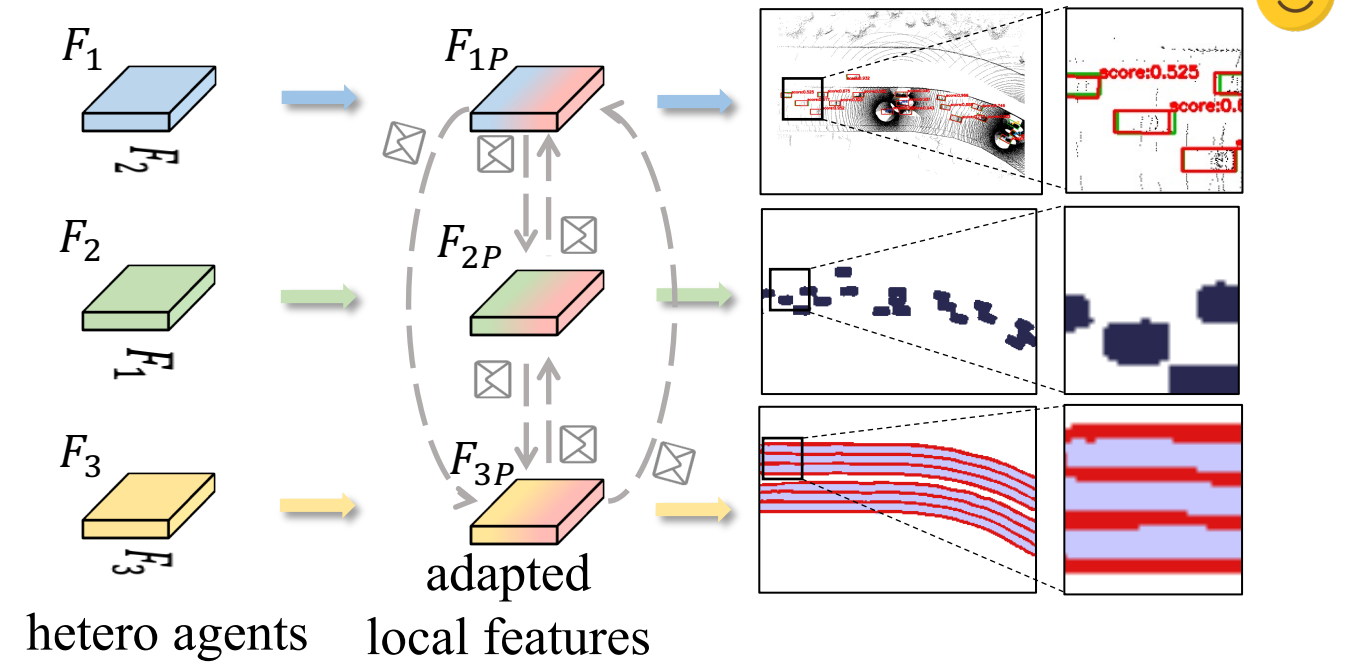
(III) After CFA (heterogeneously collaborative)



(I) Before CFA (Non-collaborative)

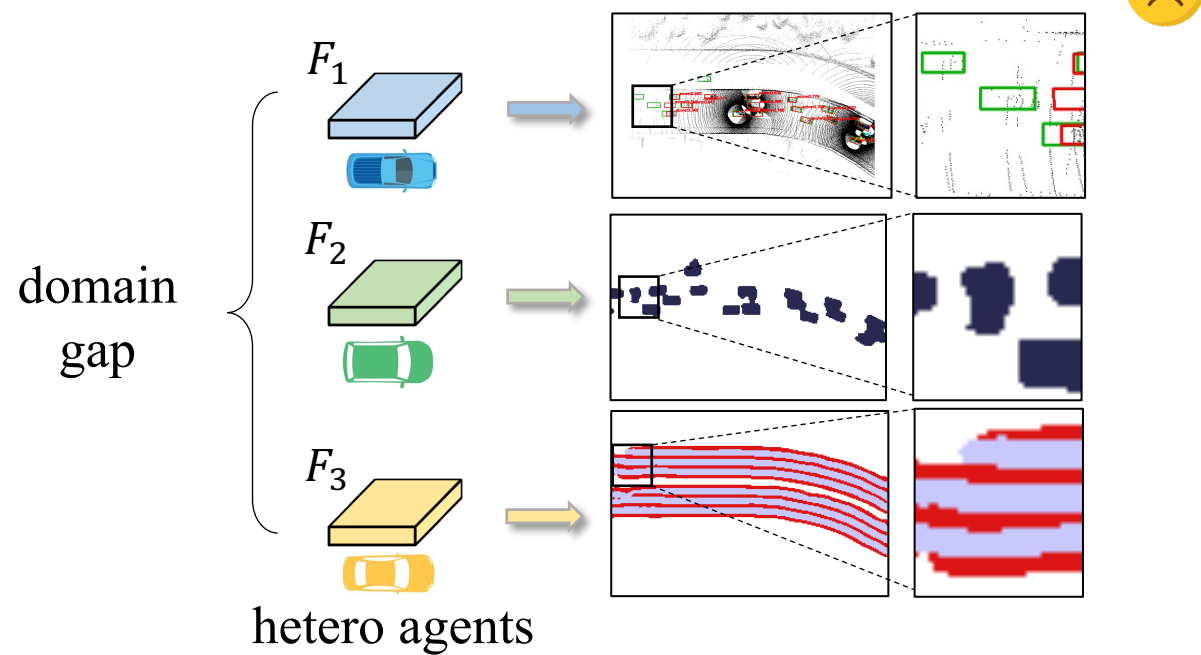


(III) After CFA (heterogeneously collaborative)

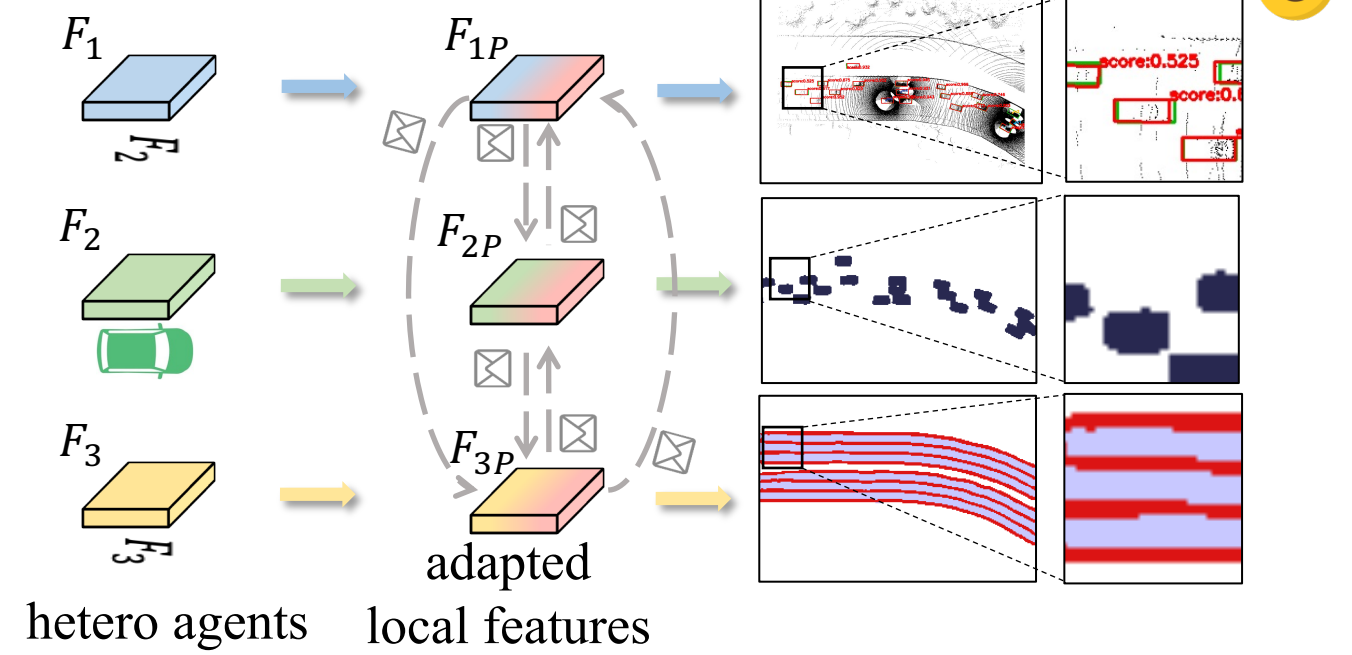


(II) Collaborative Feature Alignment (CFA)

(I) Before CFA (Non-collaborative)

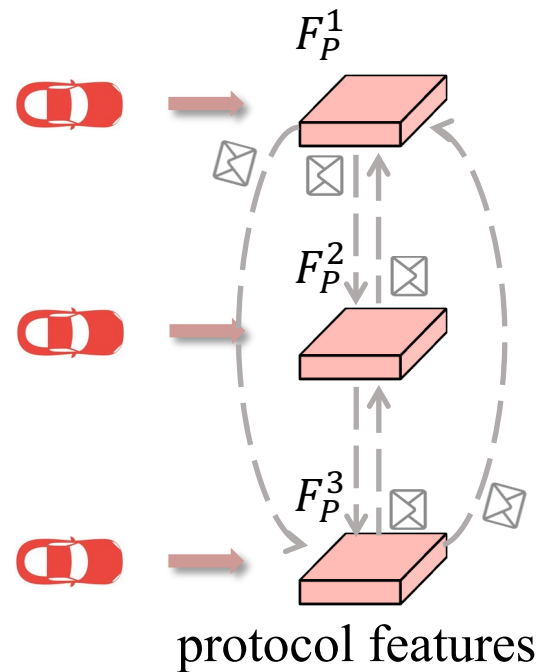


(III) After CFA (heterogeneously collaborative)

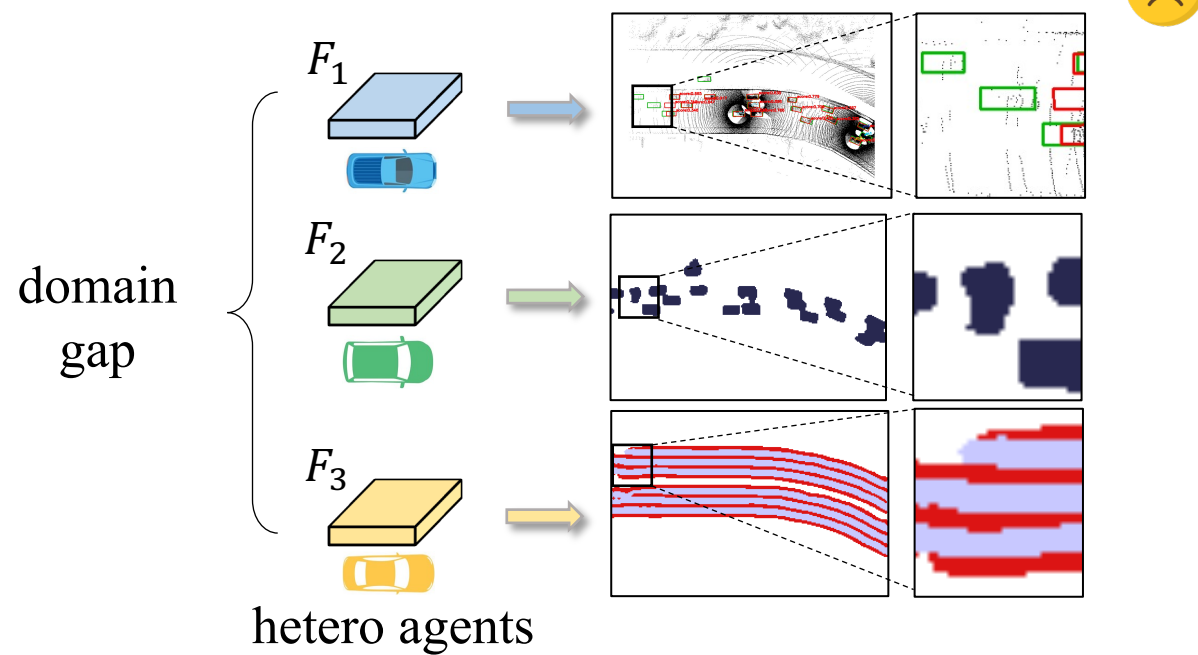


(II) Collaborative Feature Alignment (CFA)

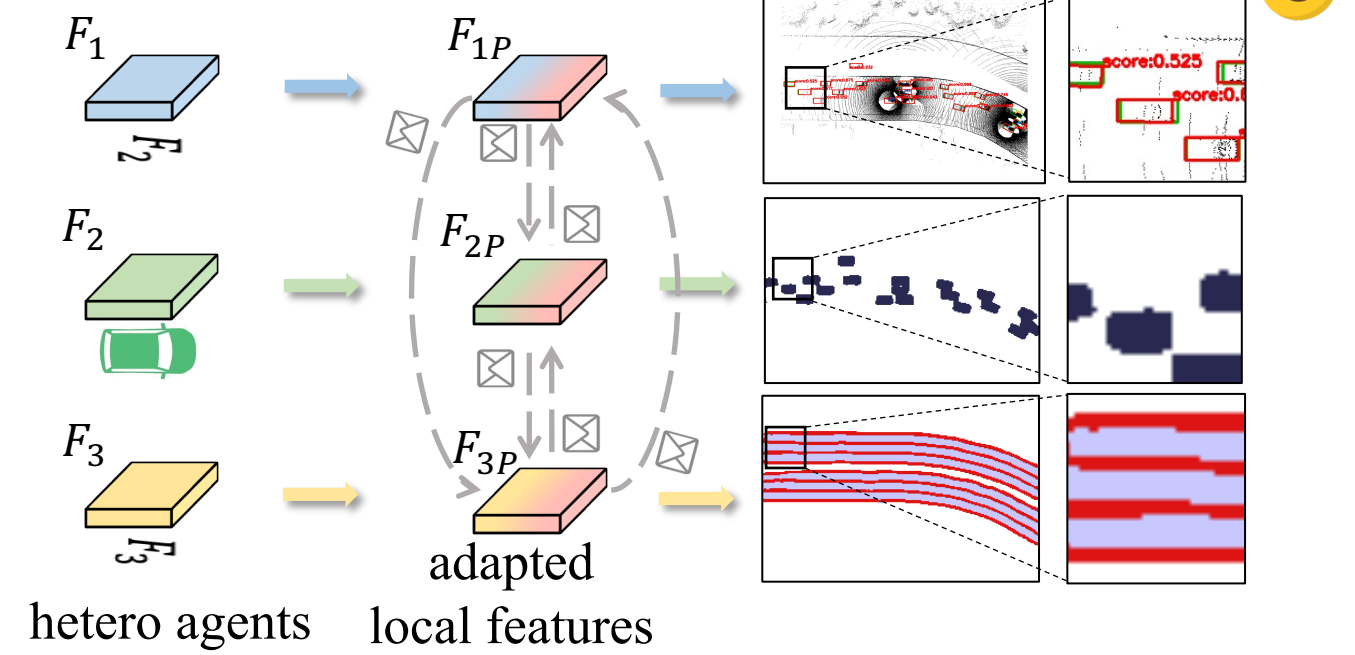
Step 1: Training Protocol Network



(I) Before CFA (Non-collaborative)

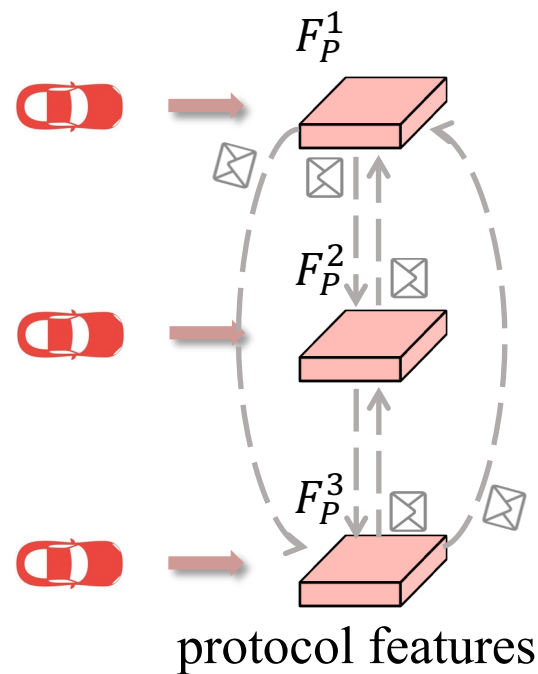


(III) After CFA (heterogeneously collaborative)



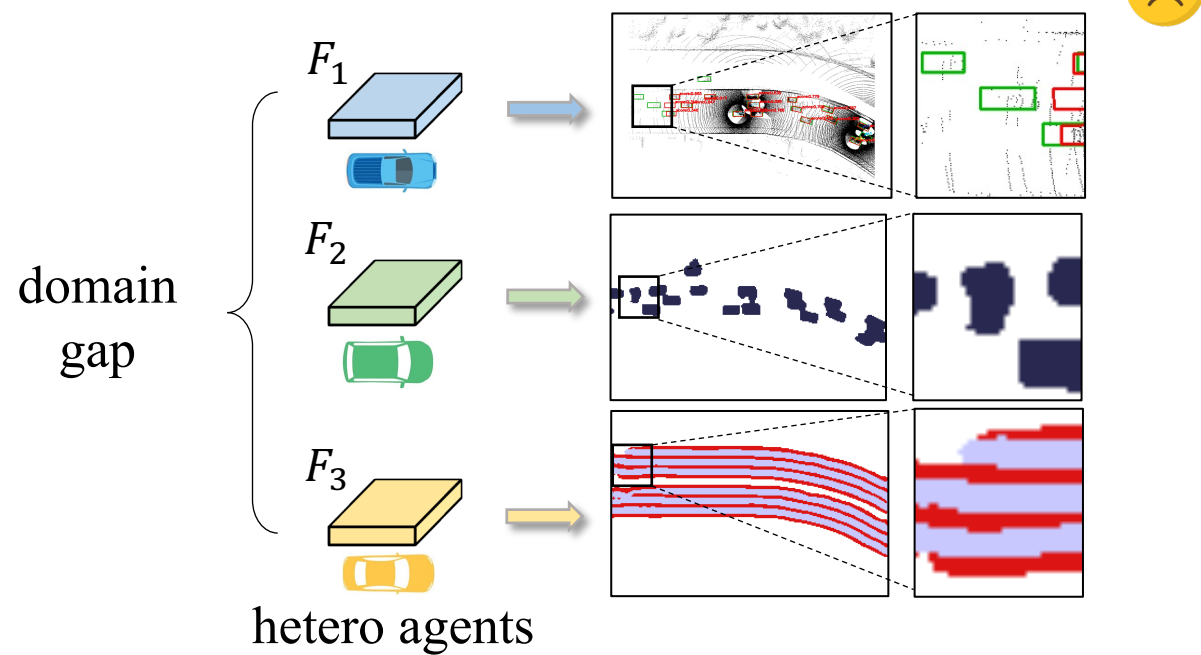
(II) Collaborative Feature Alignment (CFA)

Step 1: Training Protocol Network

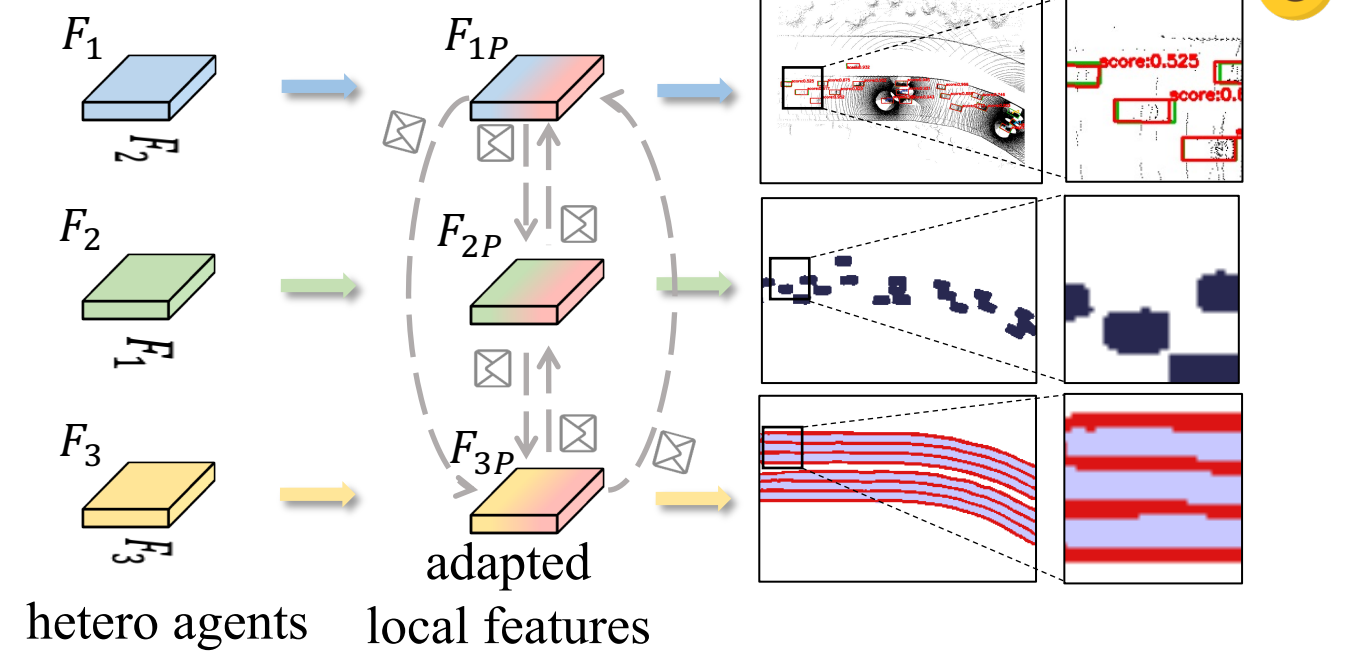


Step 2: Training Local Adapters and Reverters

(I) Before CFA (Non-collaborative)

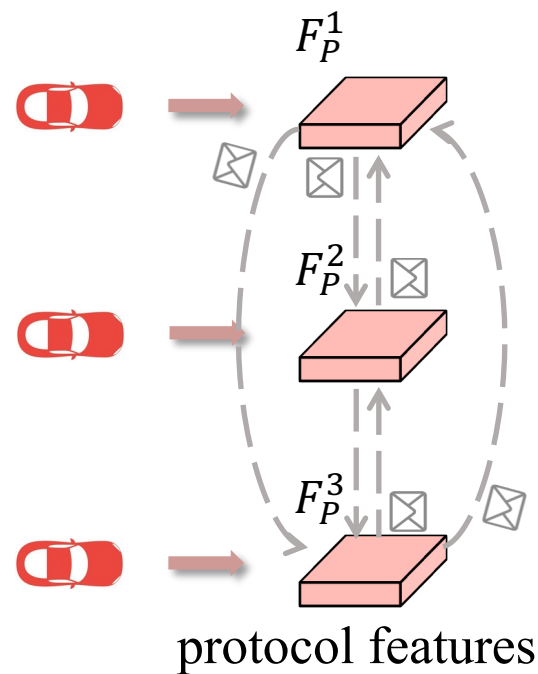


(III) After CFA (heterogeneously collaborative)



(II) Collaborative Feature Alignment (CFA)

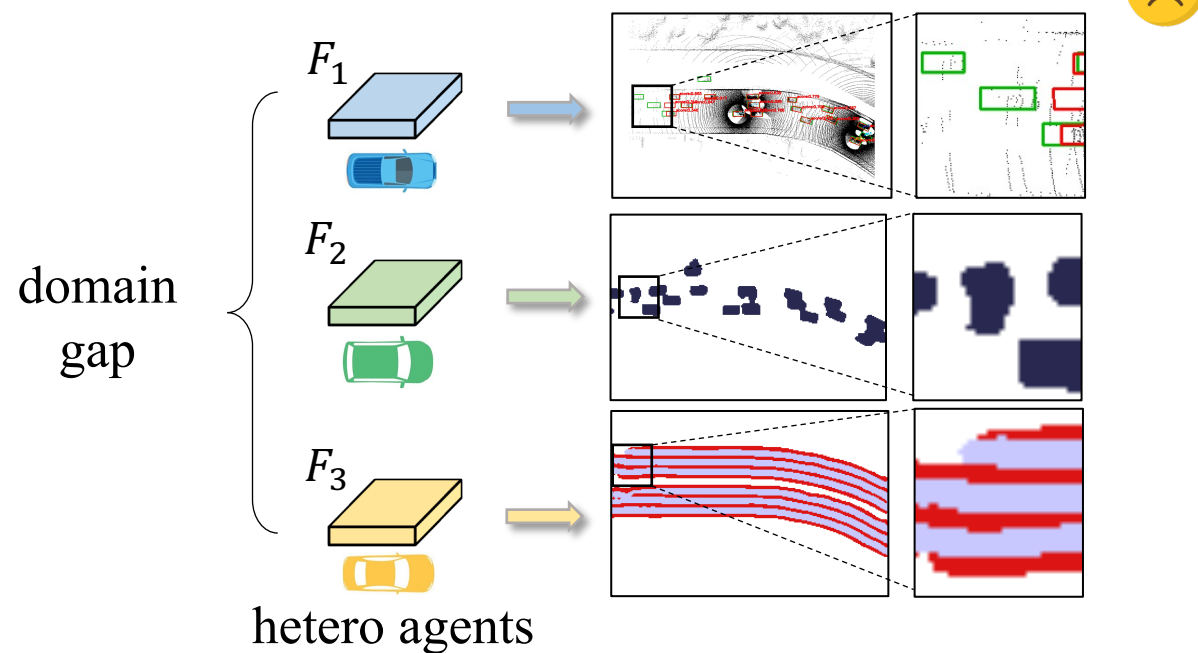
Step 1: Training Protocol Network



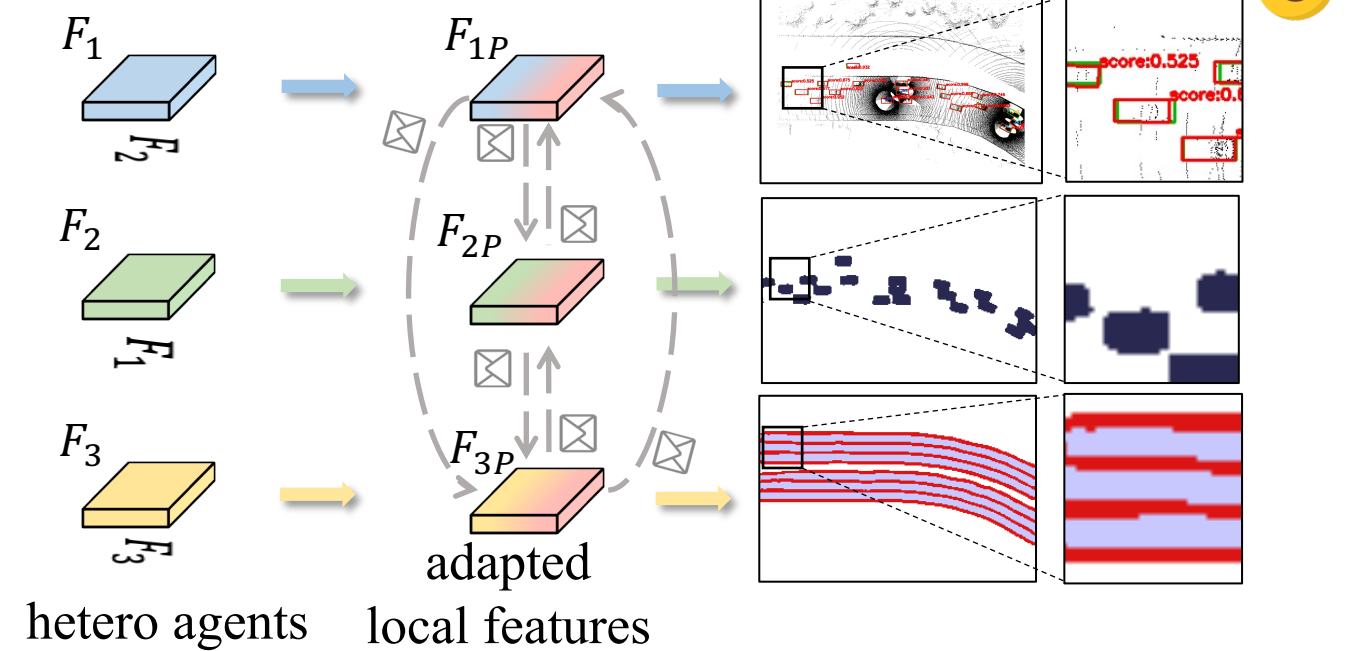
Step 2: Training Local Adapters and Reverters



(I) Before CFA (Non-collaborative)

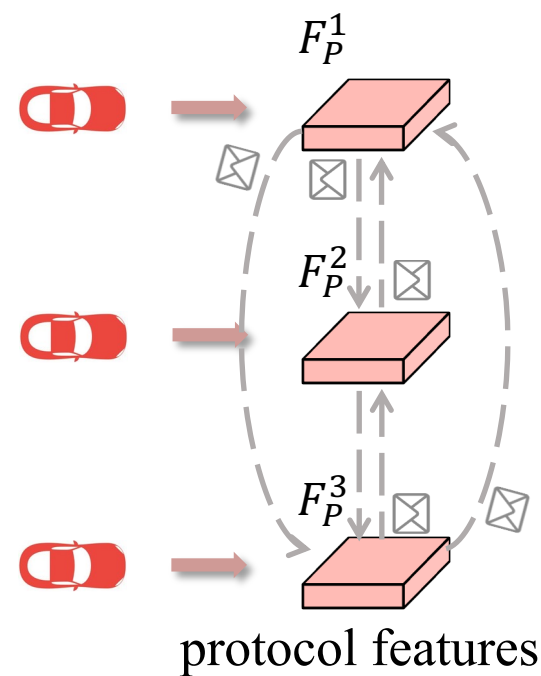


(III) After CFA (heterogeneously collaborative)

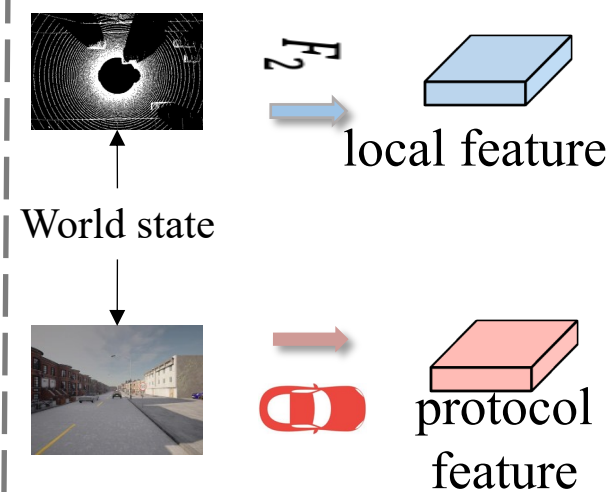


(II) Collaborative Feature Alignment (CFA)

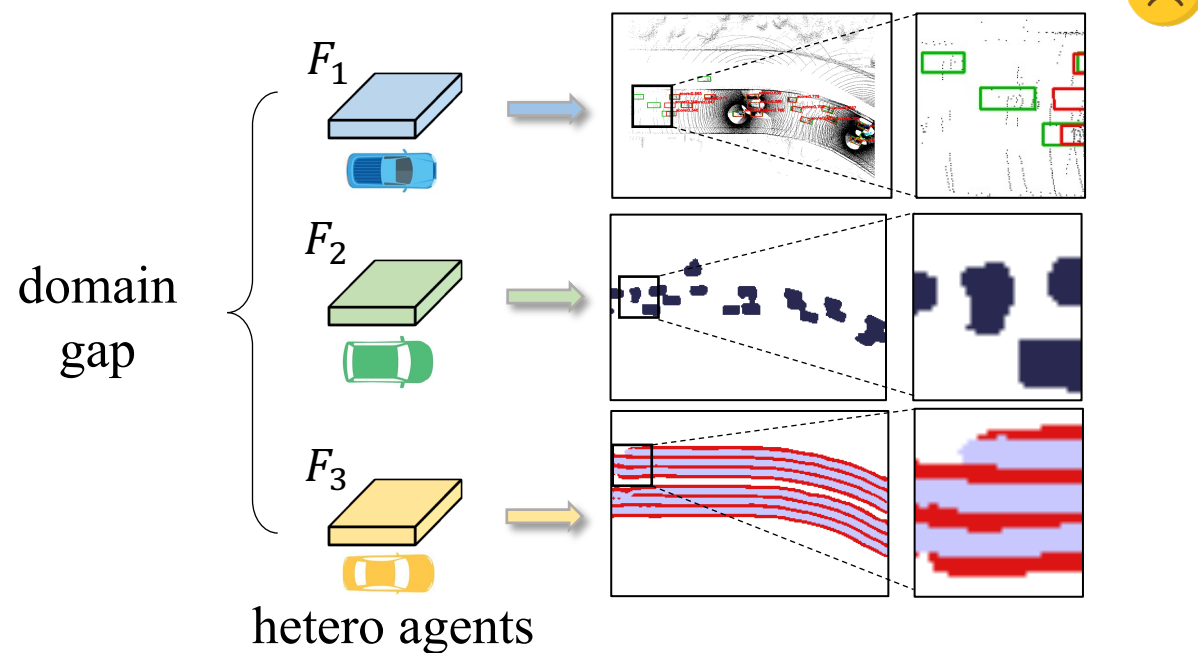
Step 1: Training Protocol Network



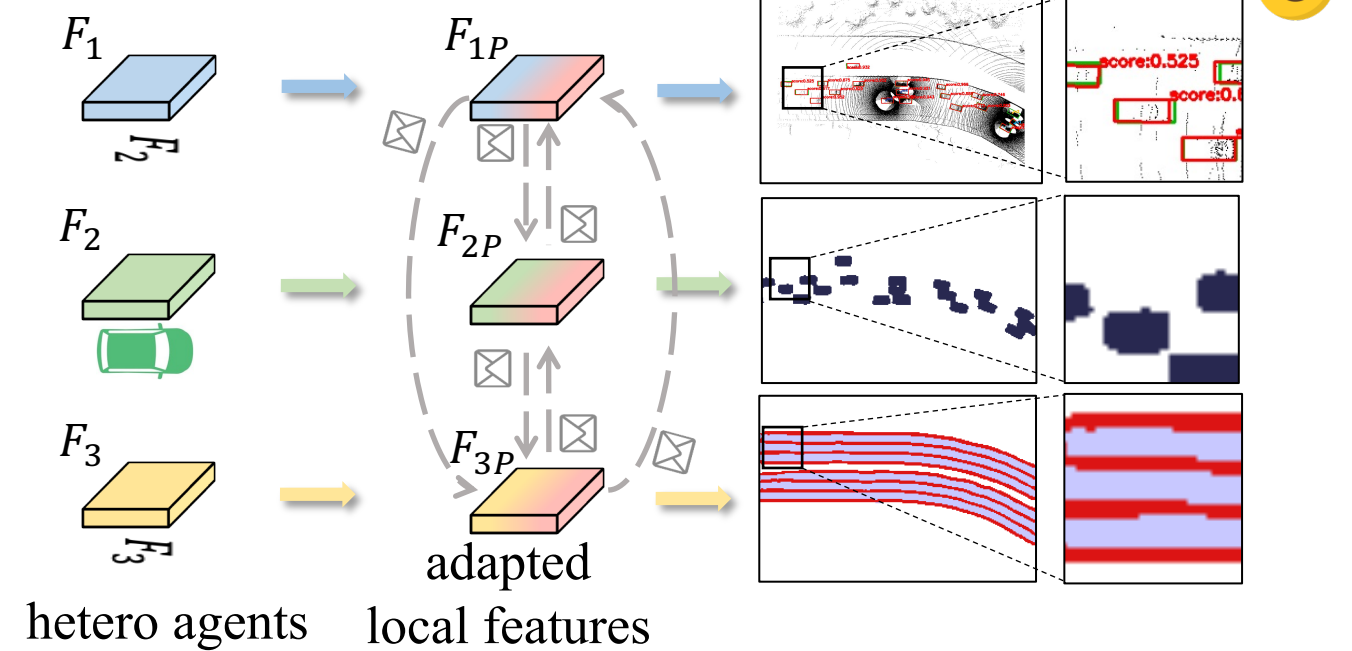
Step 2: Training Local Adapters and Reverters



(I) Before CFA (Non-collaborative)

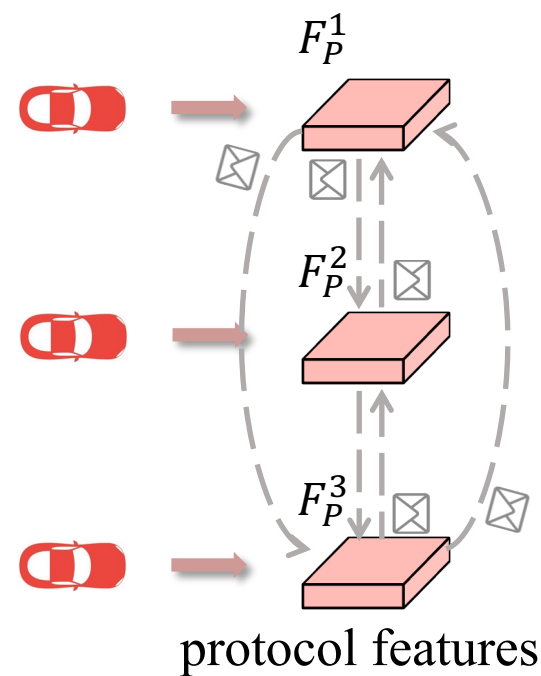


(III) After CFA (heterogeneously collaborative)

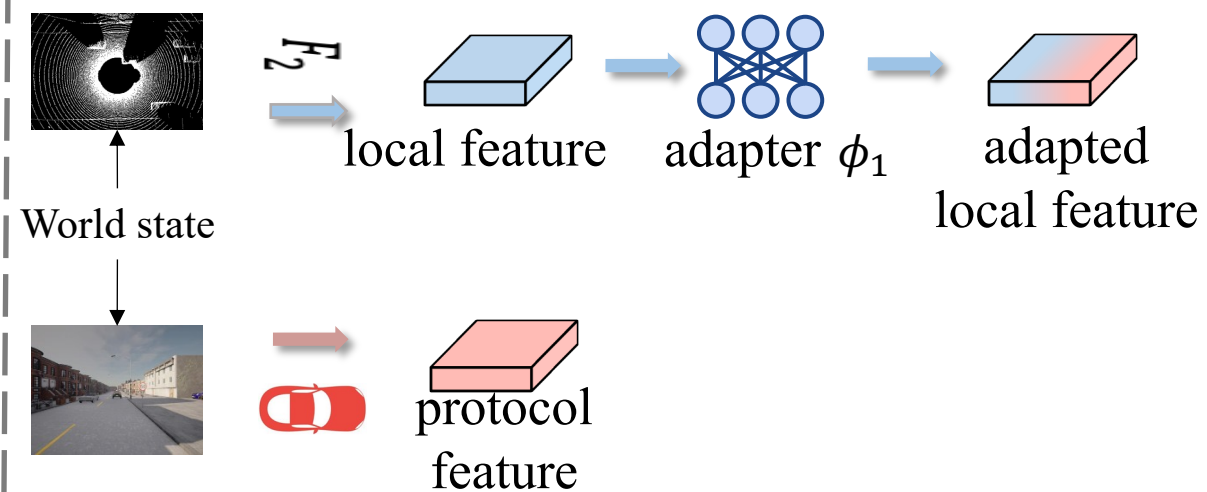


(II) Collaborative Feature Alignment (CFA)

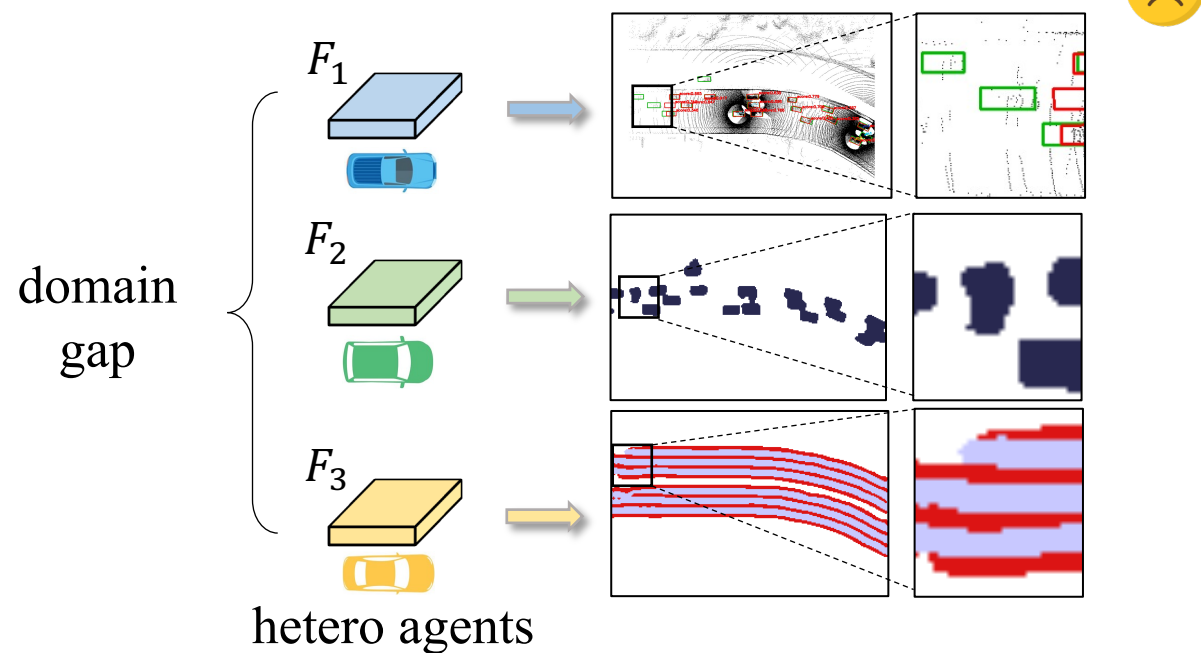
Step 1: Training Protocol Network



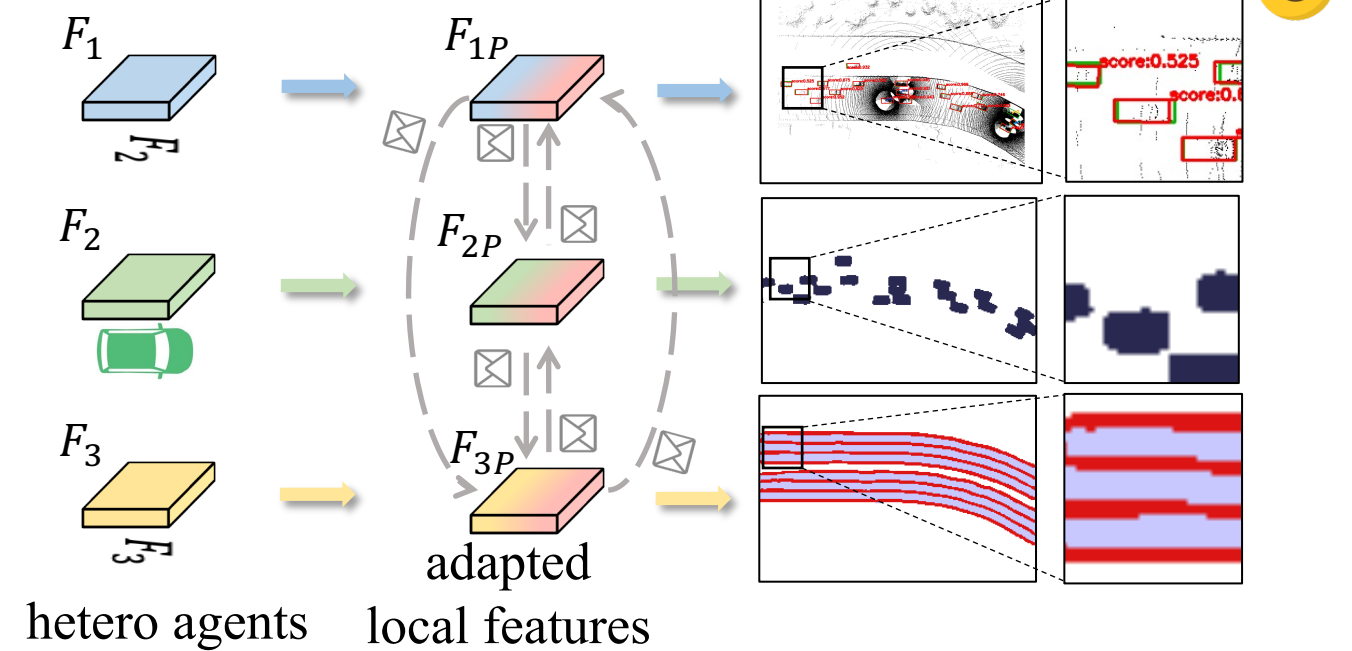
Step 2: Training Local Adapters and Reverters



(I) Before CFA (Non-collaborative)

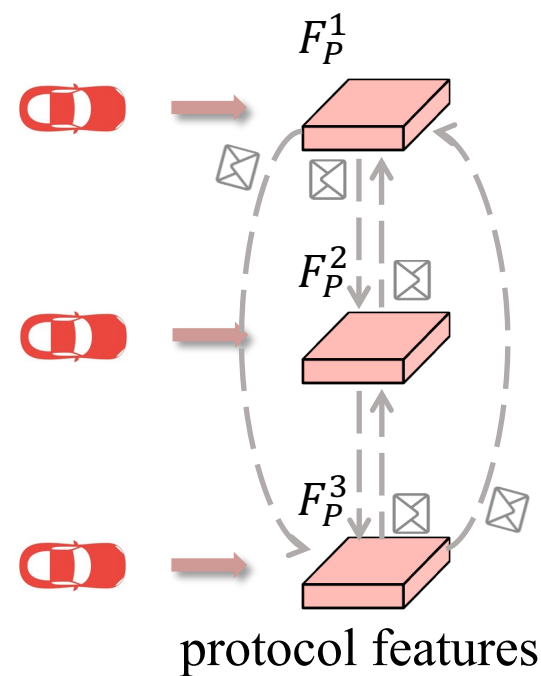


(III) After CFA (heterogeneously collaborative)

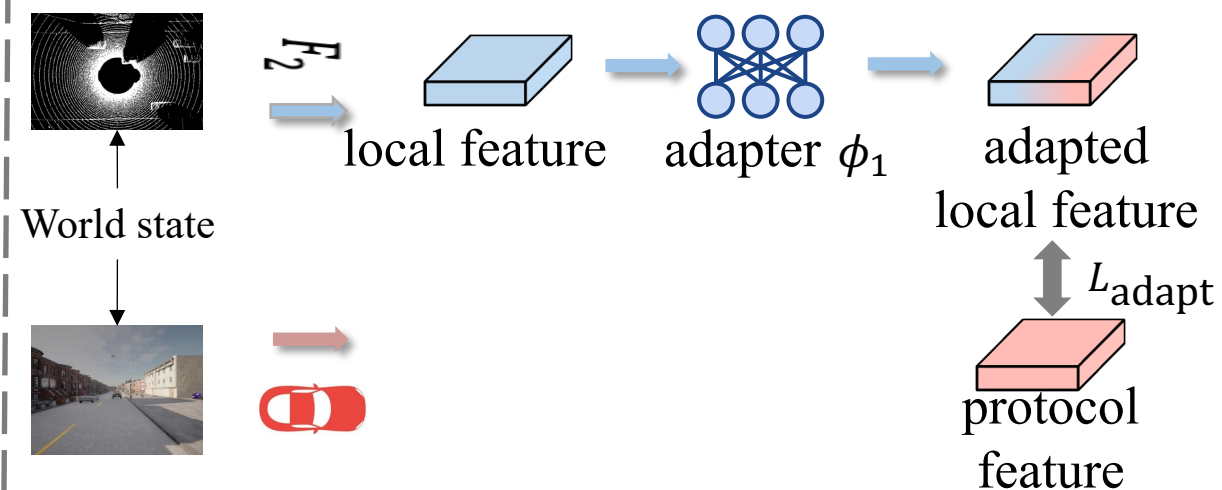


(II) Collaborative Feature Alignment (CFA)

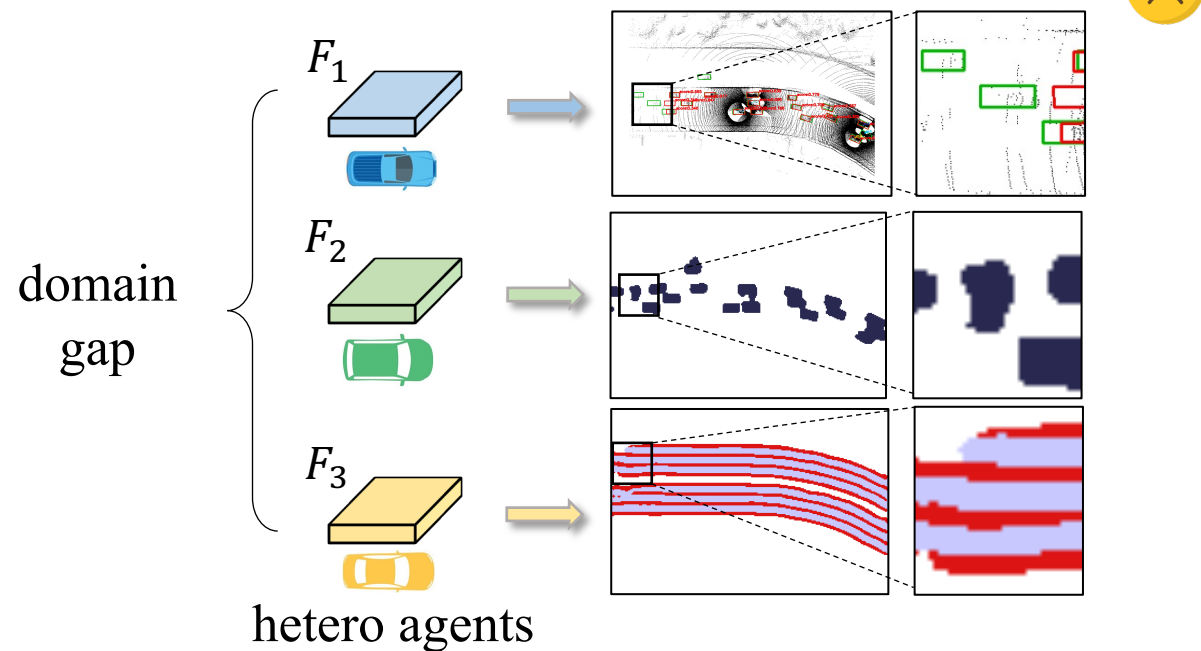
Step 1: Training Protocol Network



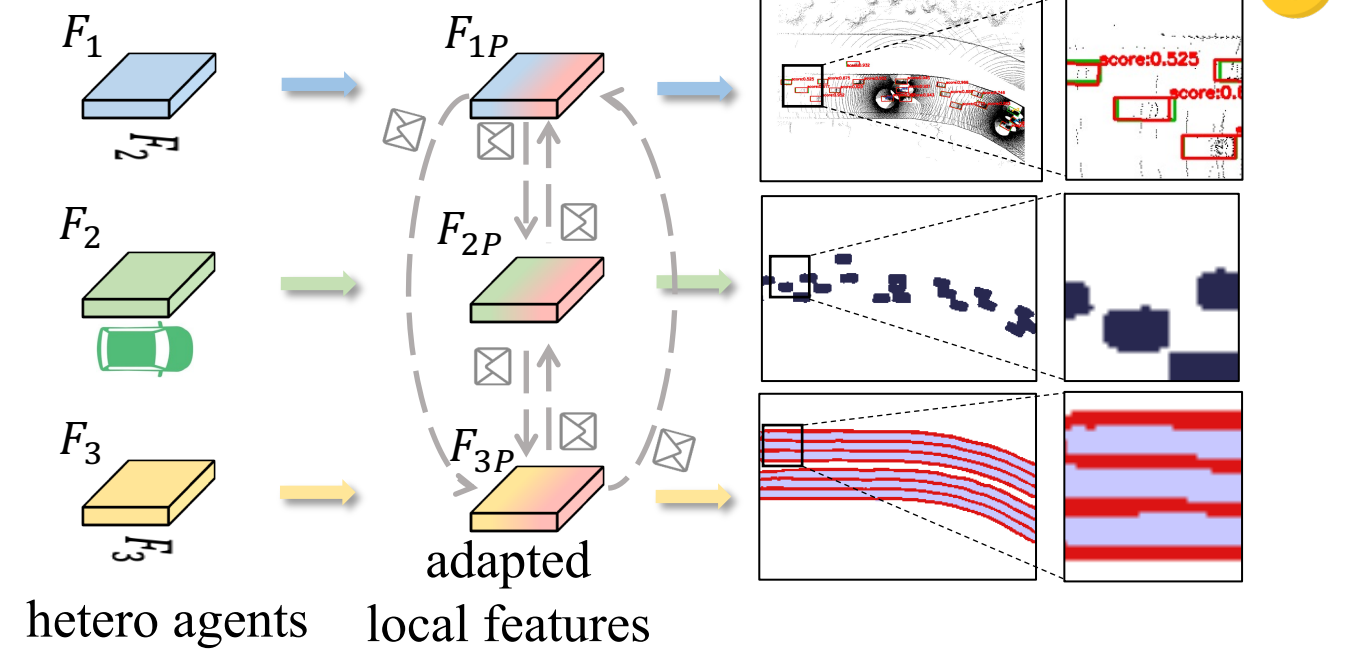
Step 2: Training Local Adapters and Reverters



(I) Before CFA (Non-collaborative)

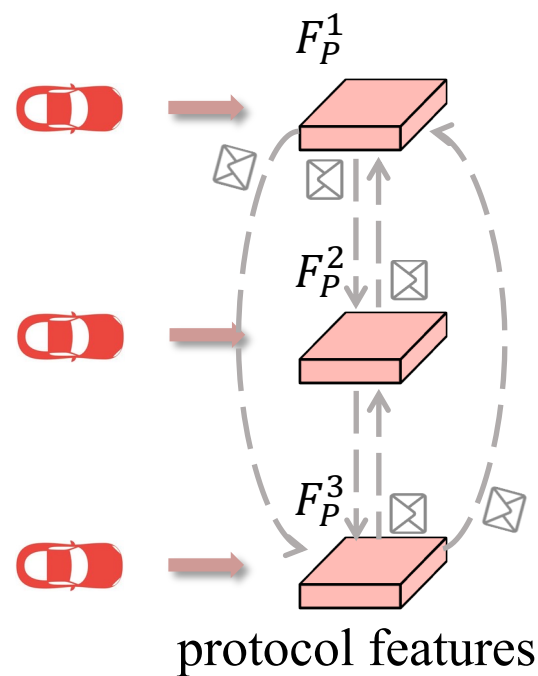


(III) After CFA (heterogeneously collaborative)

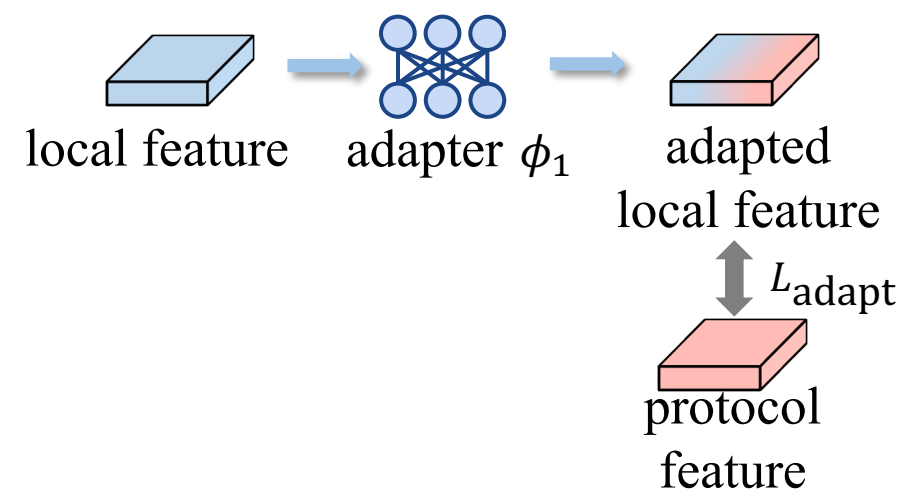


(II) Collaborative Feature Alignment (CFA)

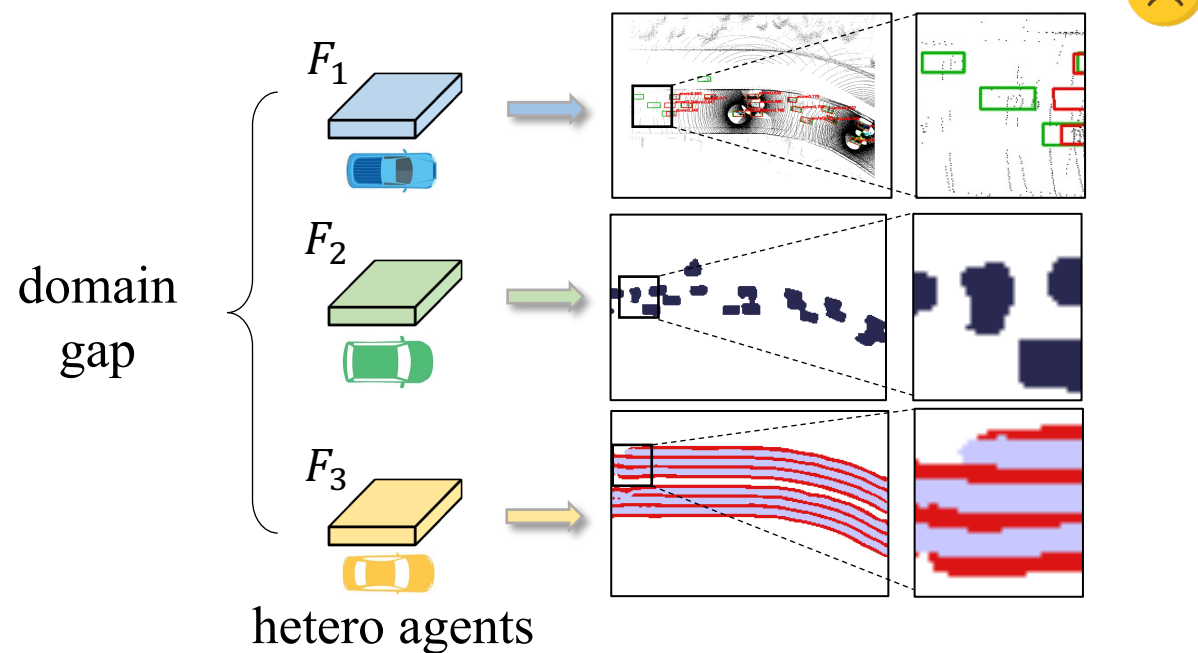
Step 1: Training Protocol Network



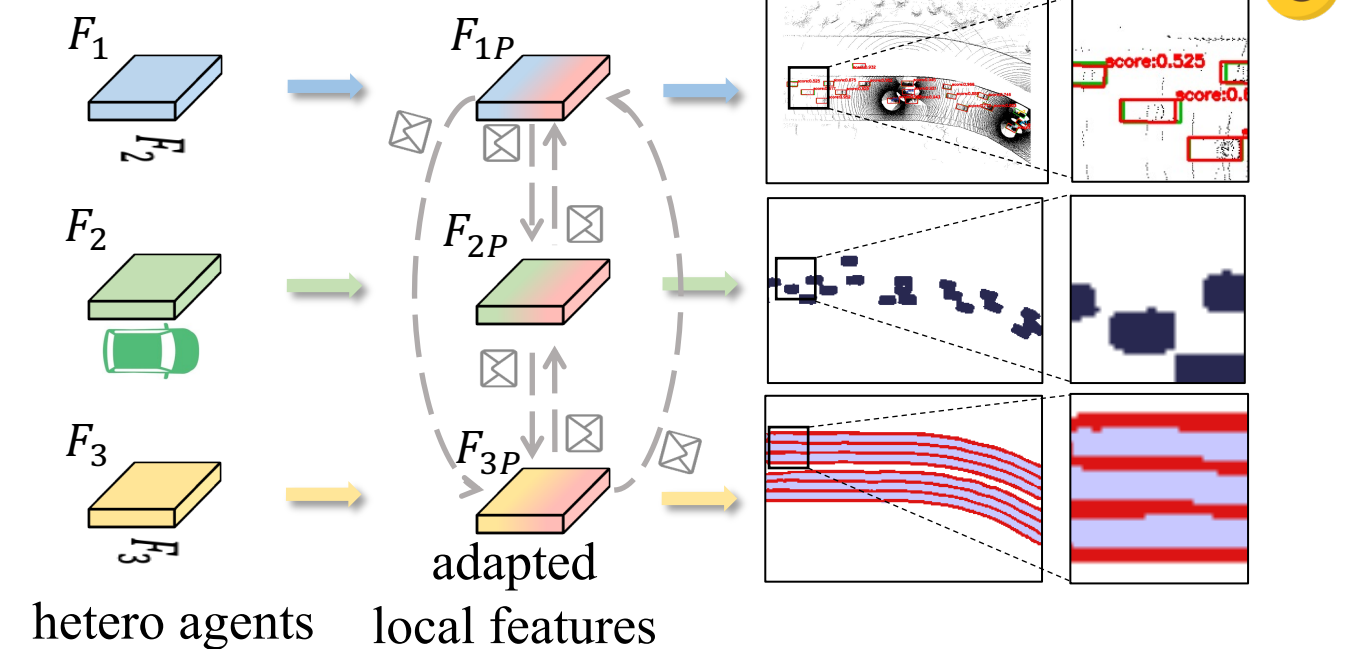
Step 2: Training Local Adapters and Reverters



(I) Before CFA (Non-collaborative)

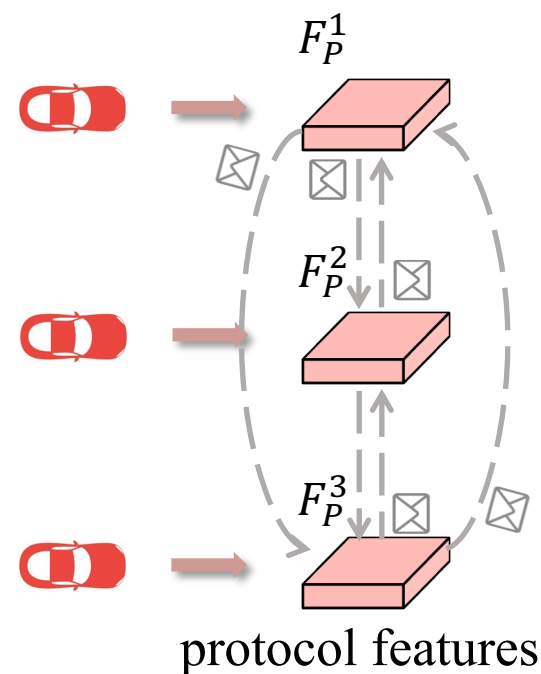


(III) After CFA (heterogeneously collaborative)

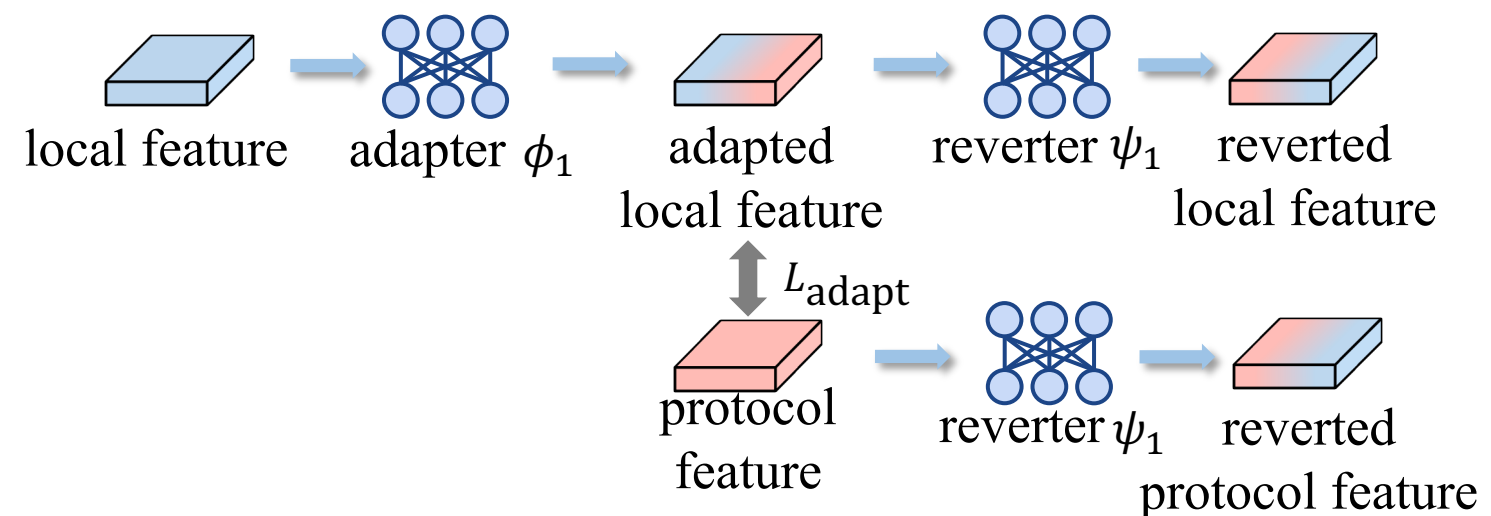


(II) Collaborative Feature Alignment (CFA)

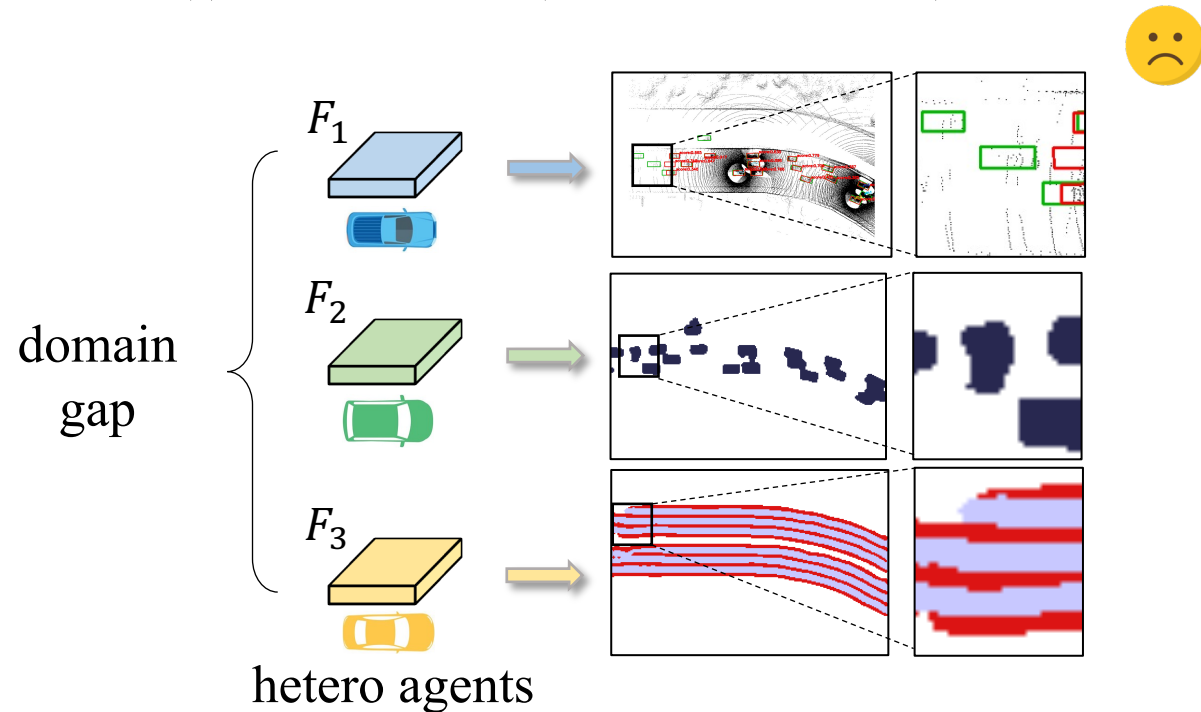
Step 1: Training Protocol Network



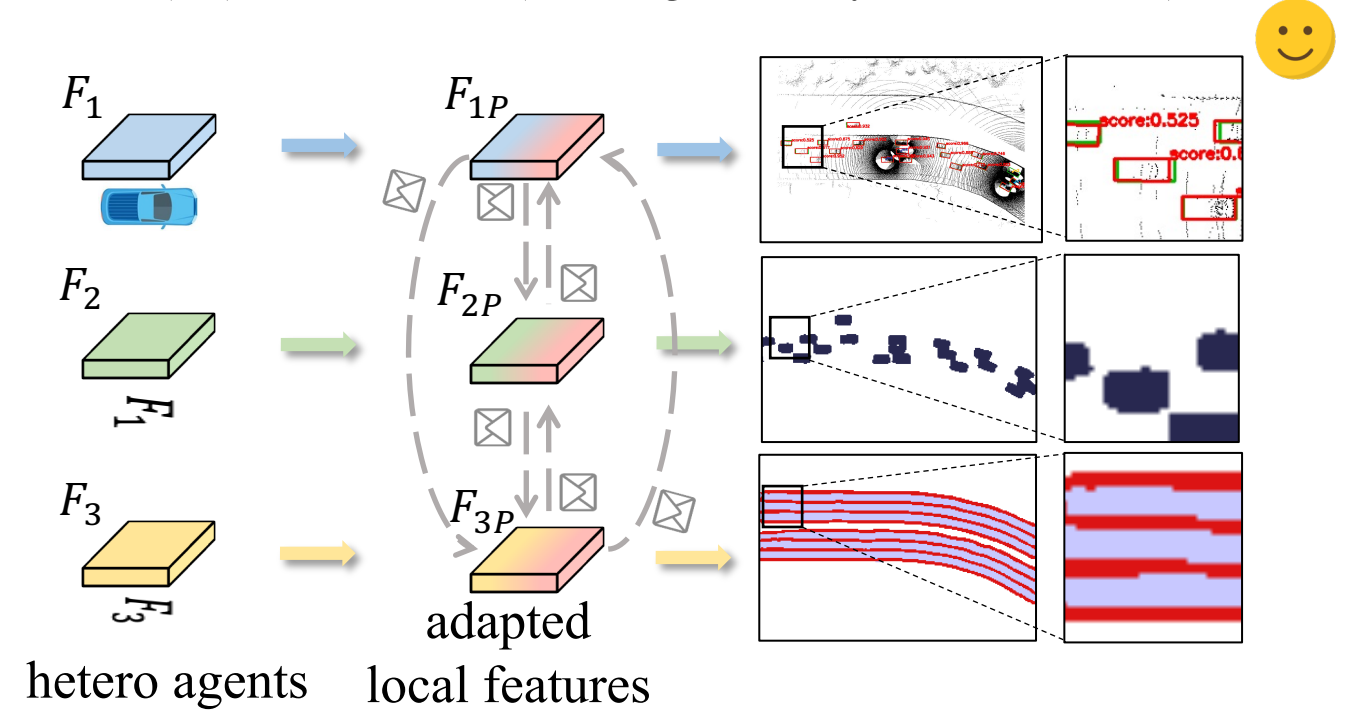
Step 2: Training Local Adapters and Reverters



(I) Before CFA (Non-collaborative)

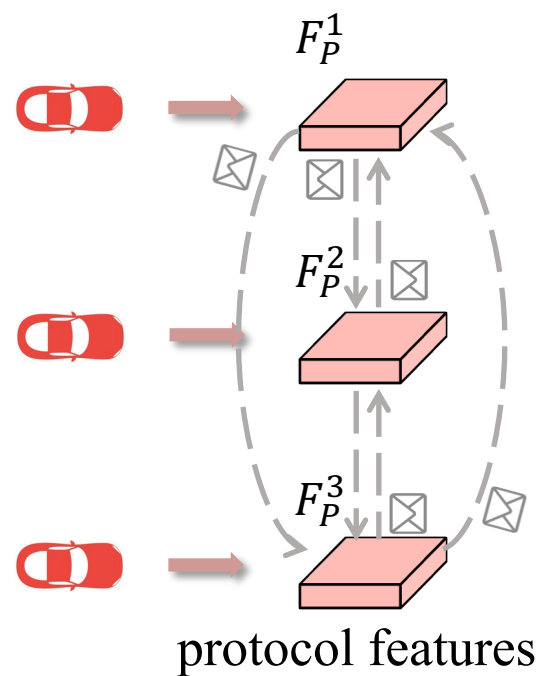


(III) After CFA (heterogeneously collaborative)

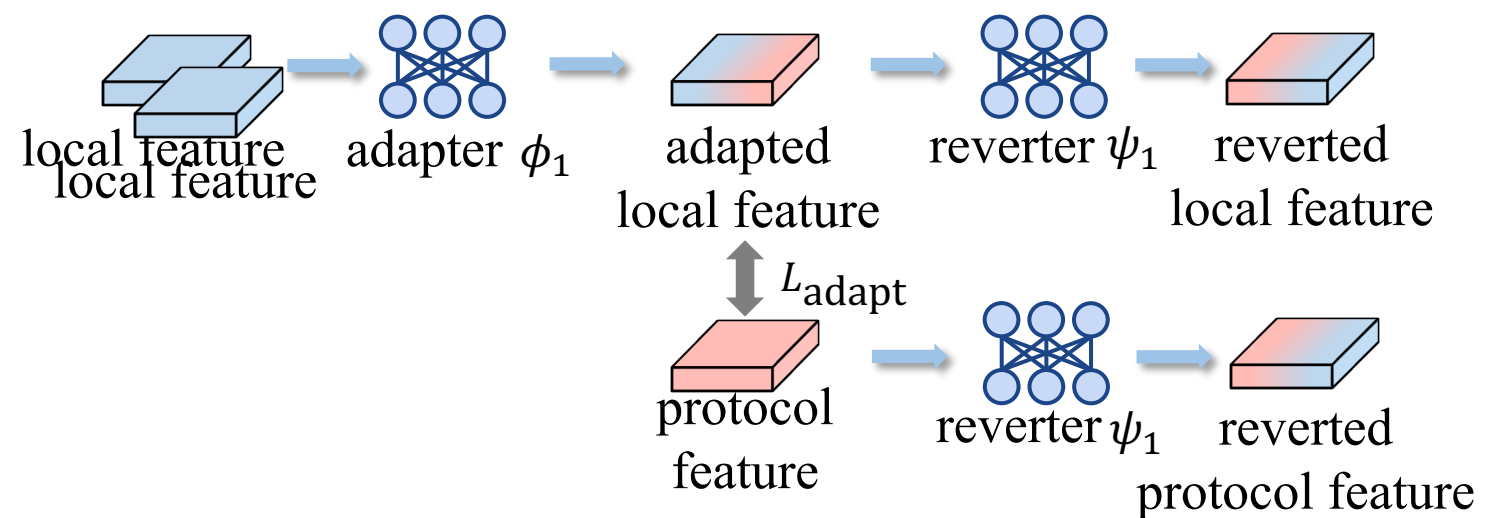


(II) Collaborative Feature Alignment (CFA)

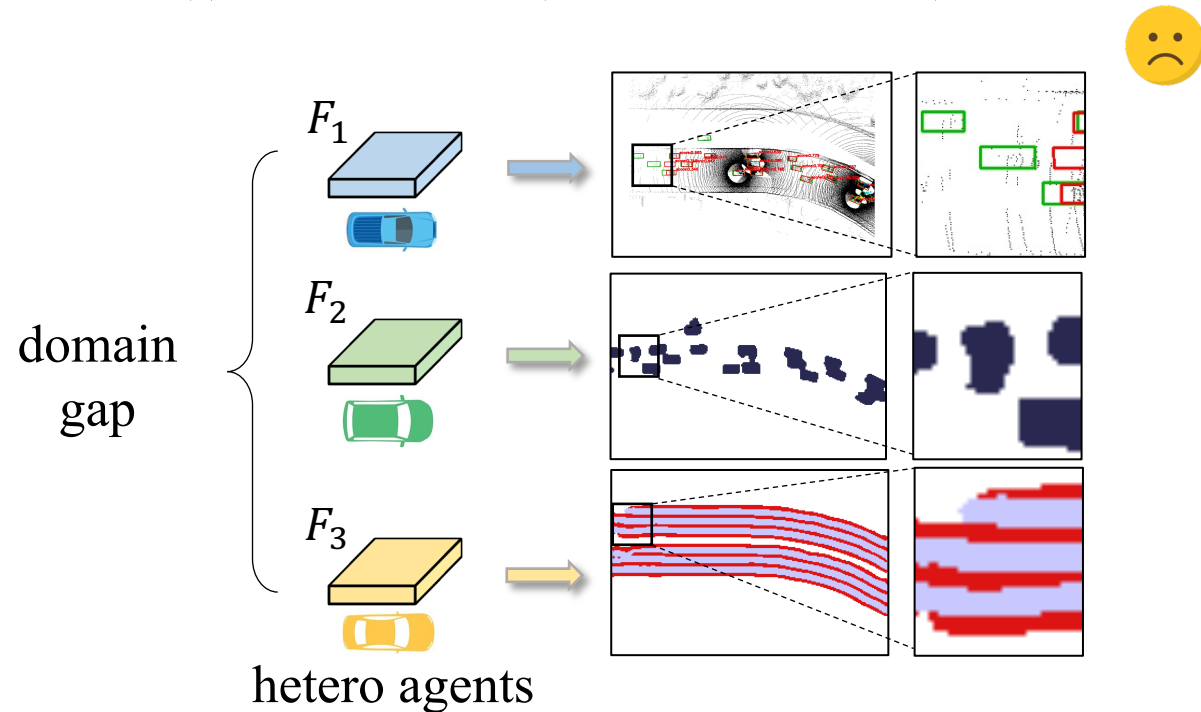
Step 1: Training Protocol Network



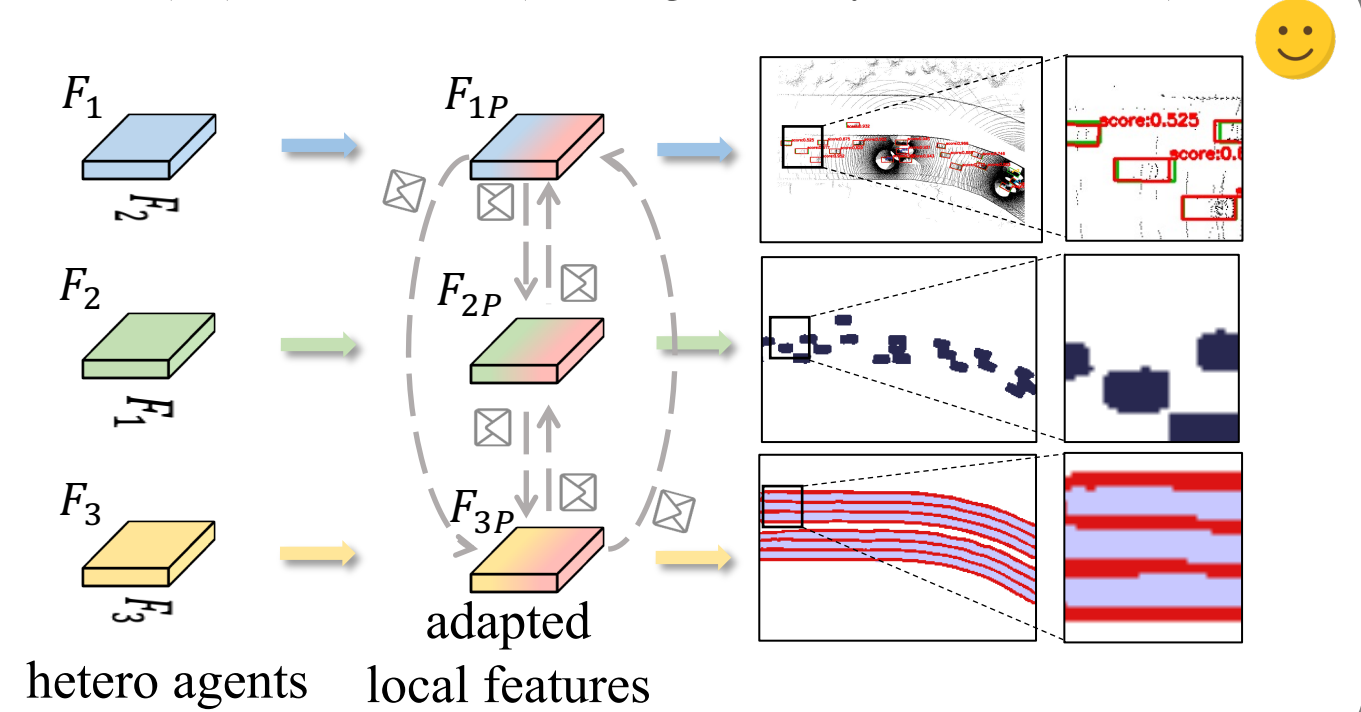
Step 2: Training Local Adapters and Reverters



(I) Before CFA (Non-collaborative)

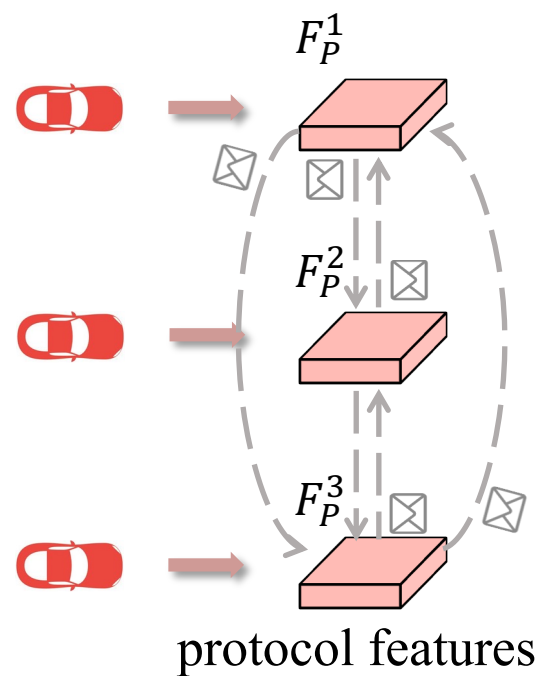


(III) After CFA (heterogeneously collaborative)

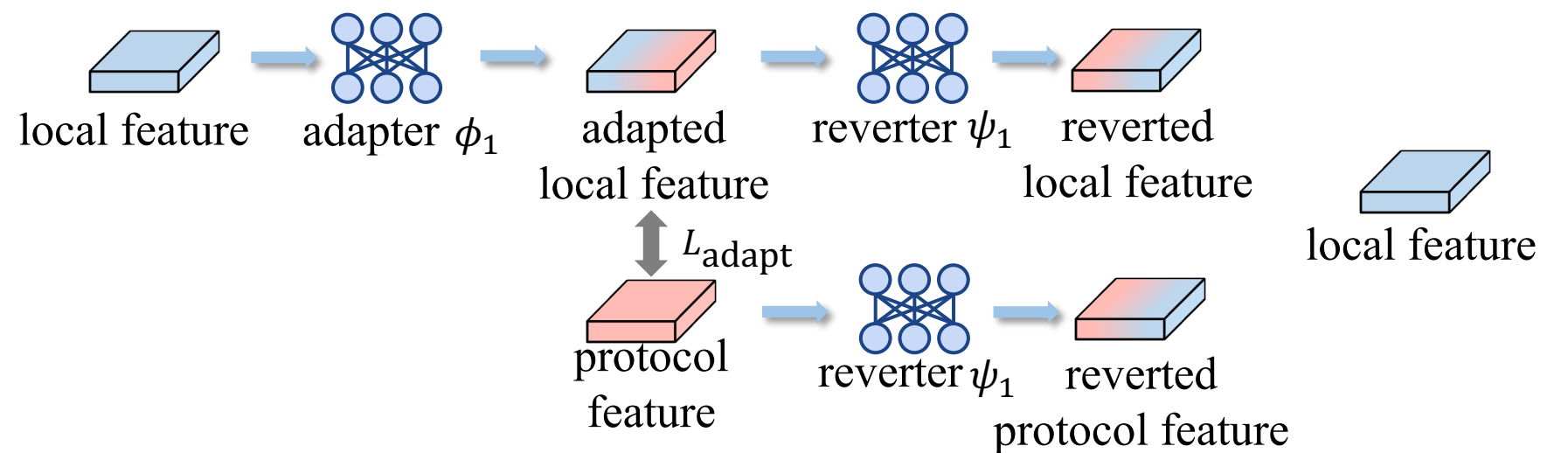


(II) Collaborative Feature Alignment (CFA)

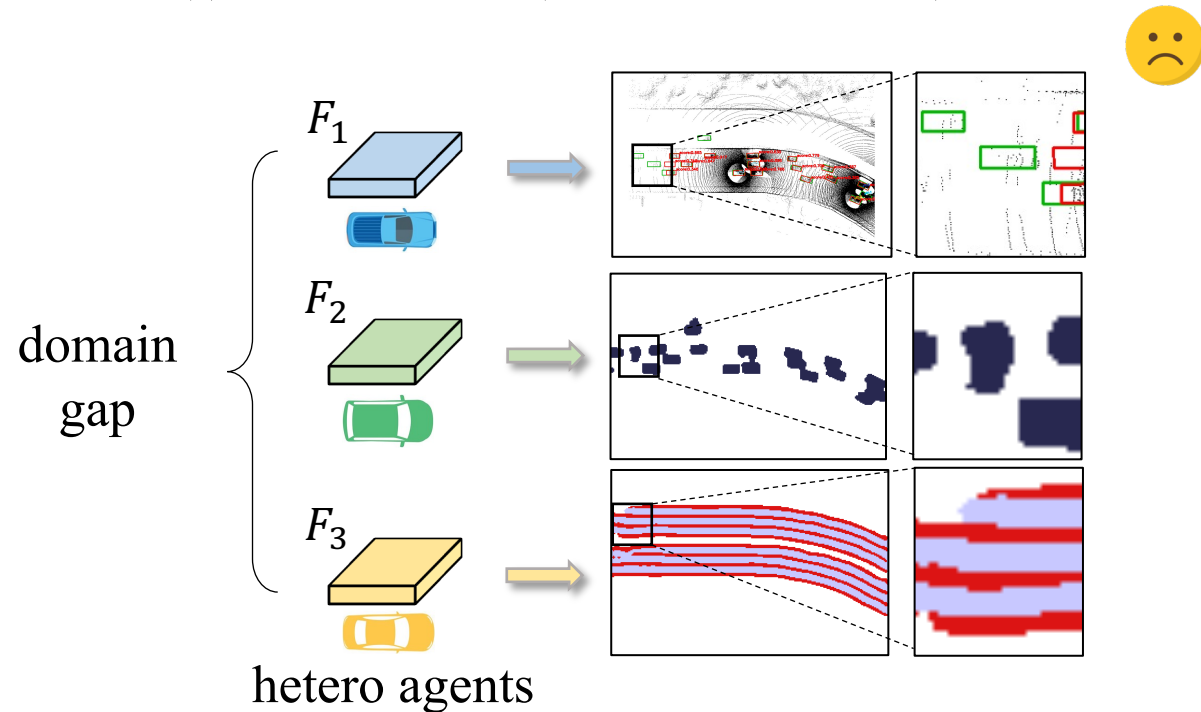
Step 1: Training Protocol Network



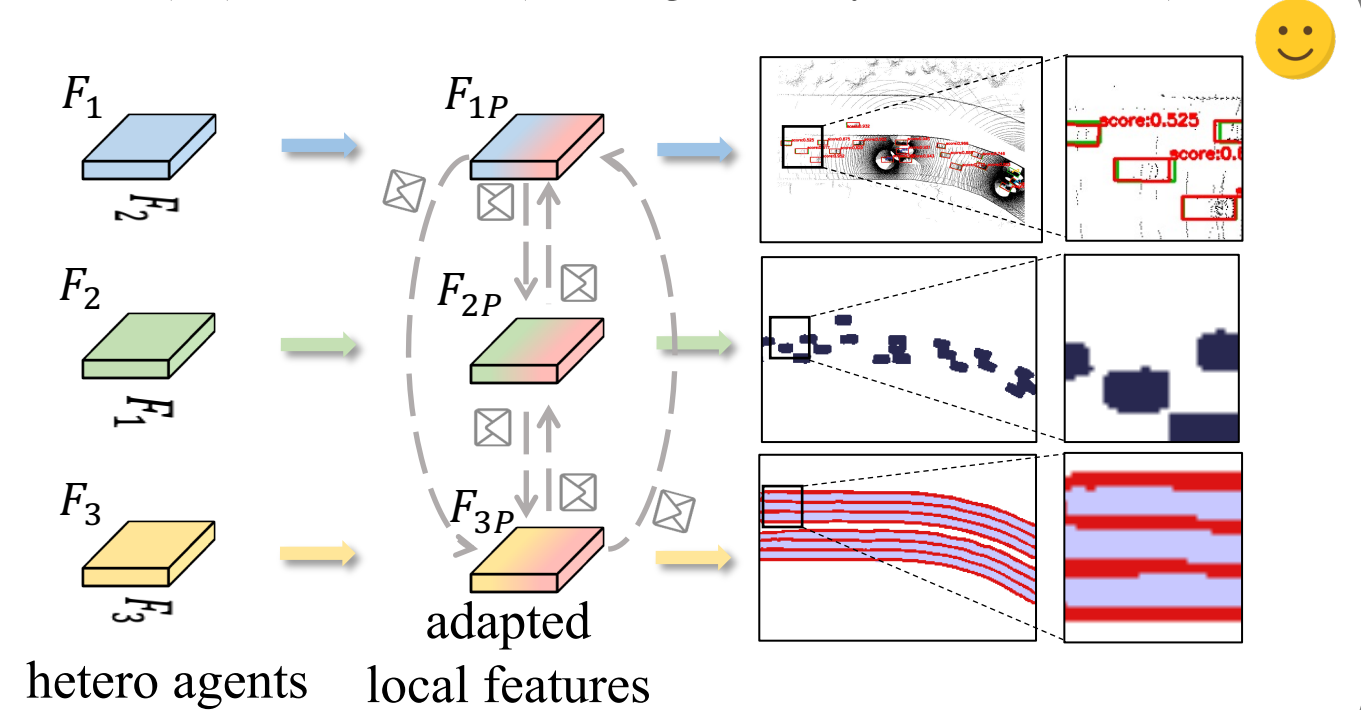
Step 2: Training Local Adapters and Reverters



(I) Before CFA (Non-collaborative)

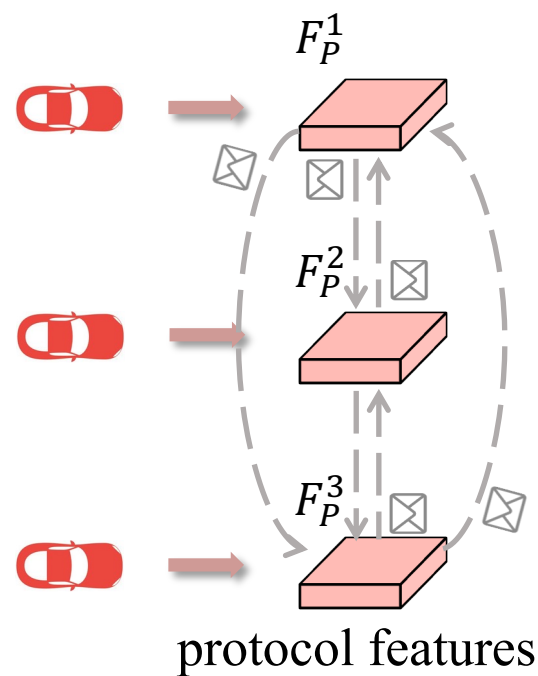


(III) After CFA (heterogeneously collaborative)

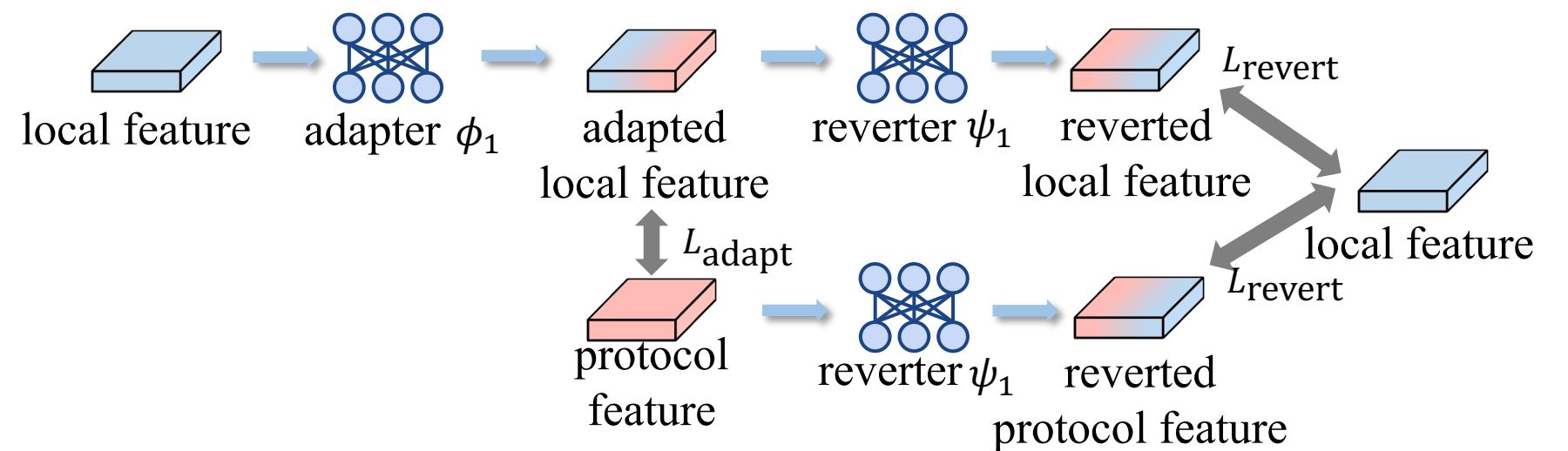


(II) Collaborative Feature Alignment (CFA)

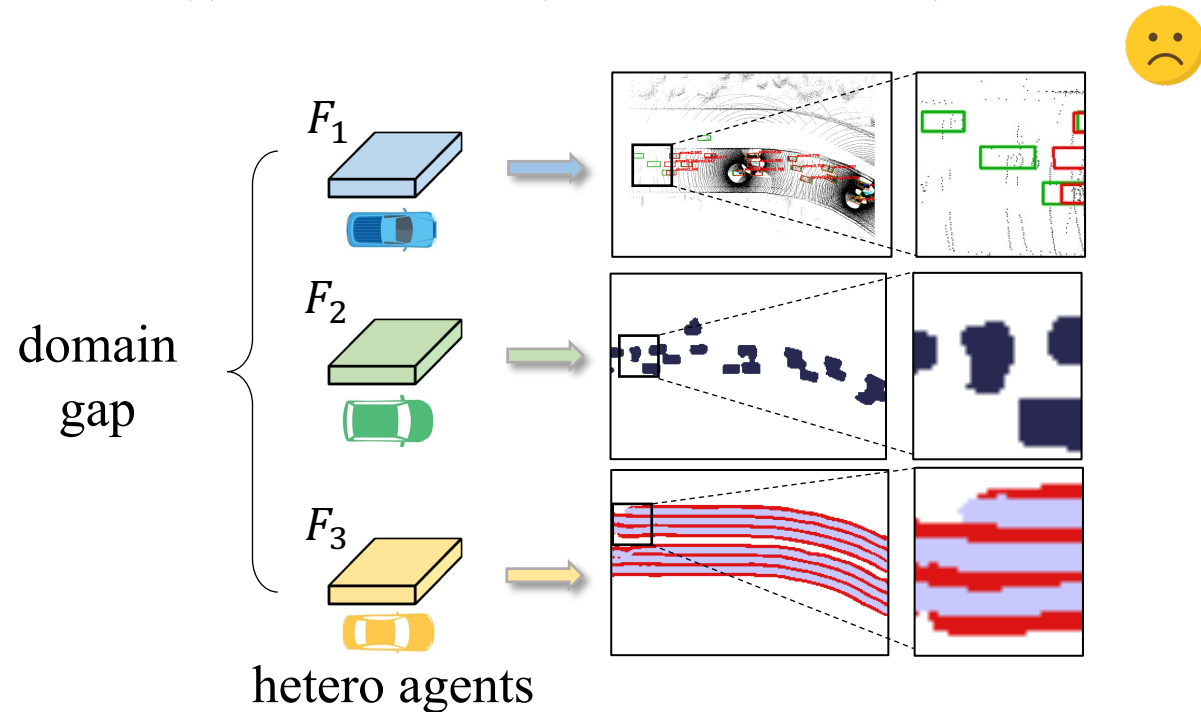
Step 1: Training Protocol Network



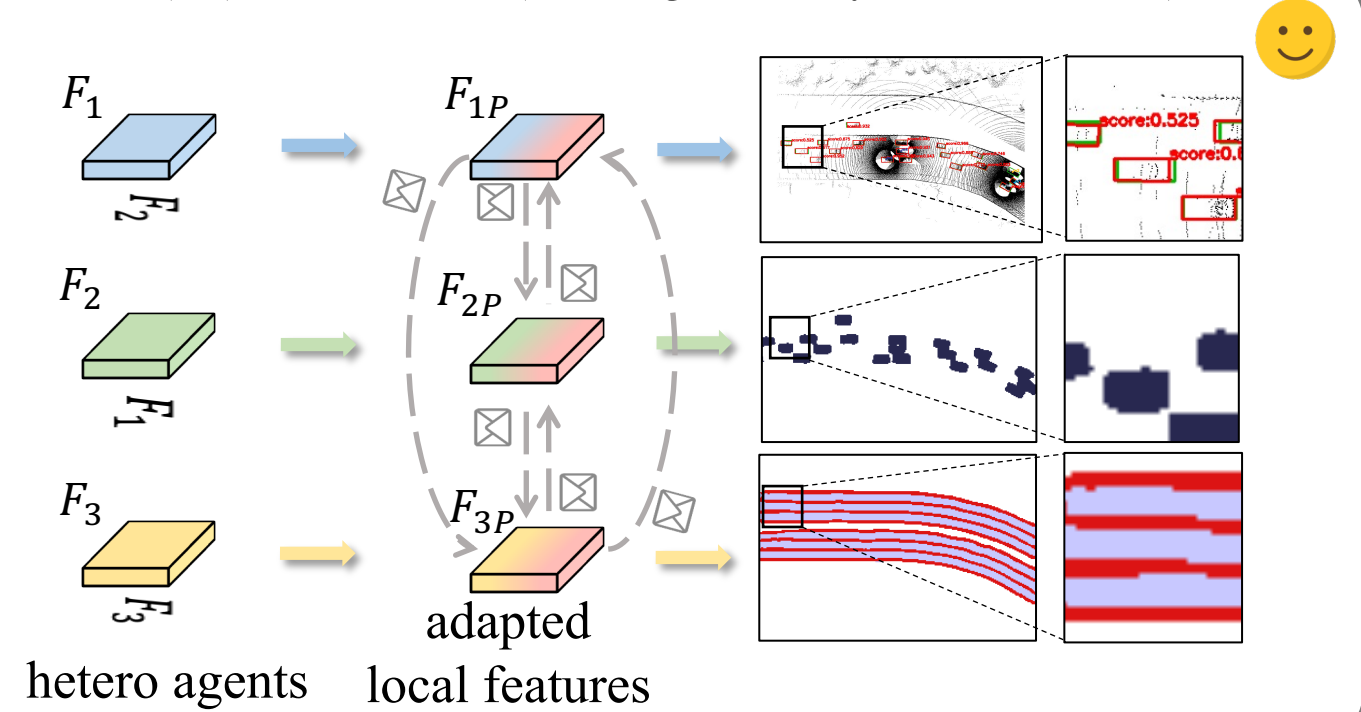
Step 2: Training Local Adapters and Reverters



(I) Before CFA (Non-collaborative)

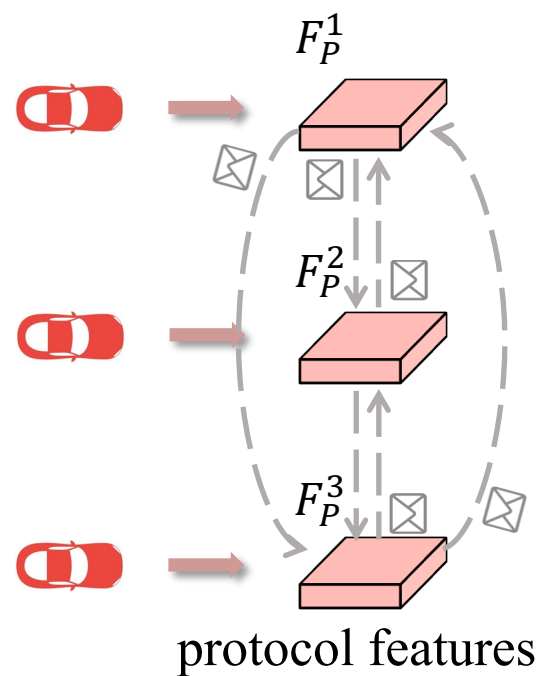


(III) After CFA (heterogeneously collaborative)

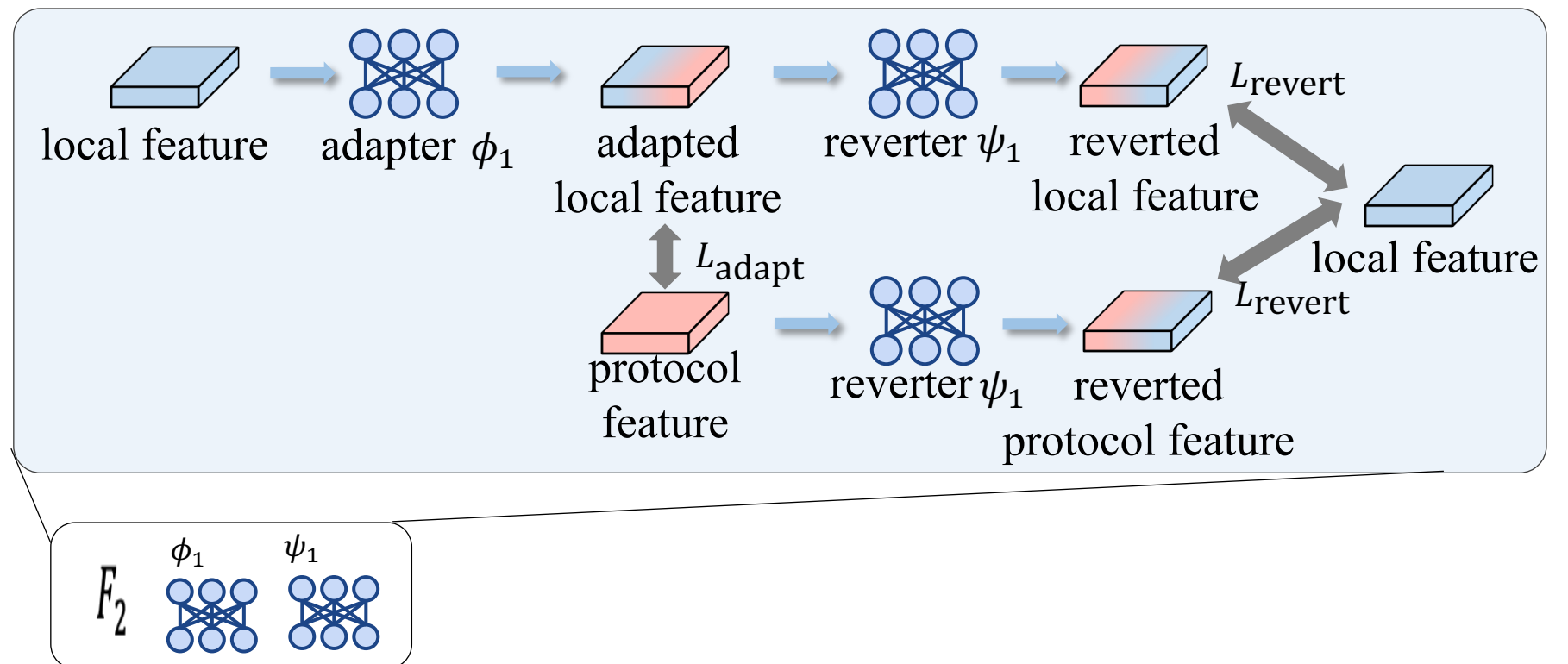


(II) Collaborative Feature Alignment (CFA)

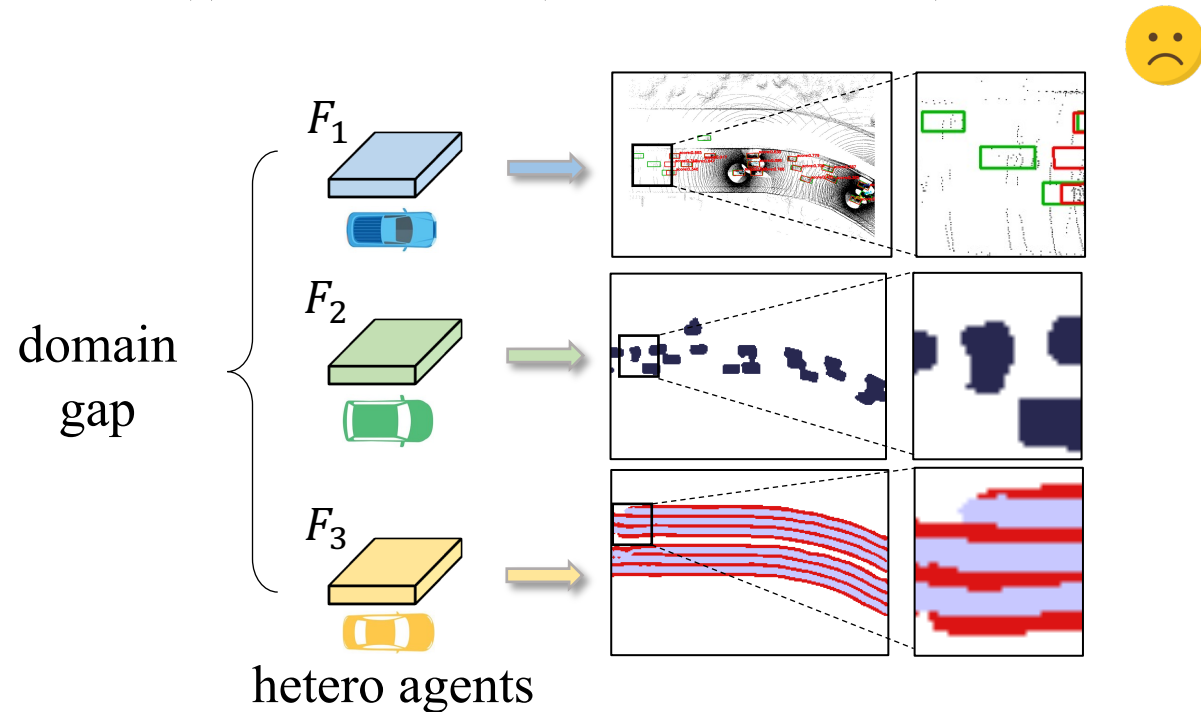
Step 1: Training Protocol Network



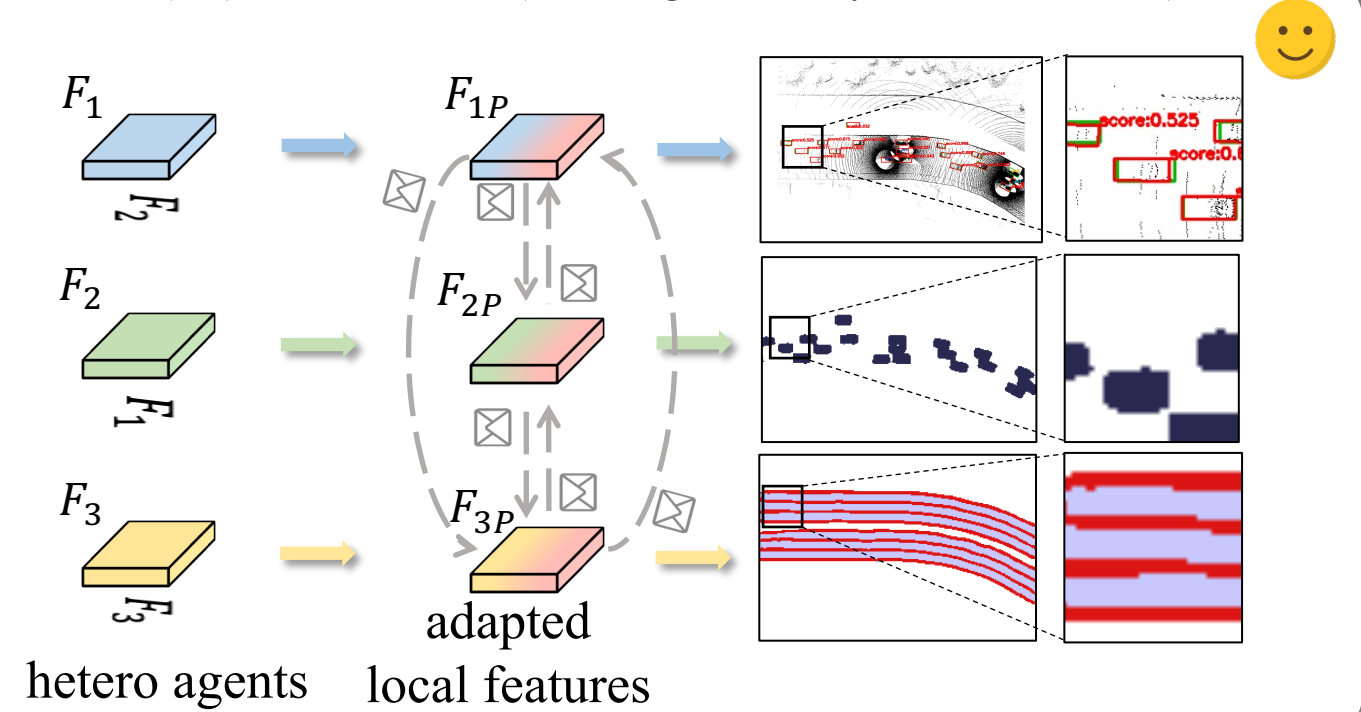
Step 2: Training Local Adapters and Reverters



(I) Before CFA (Non-collaborative)

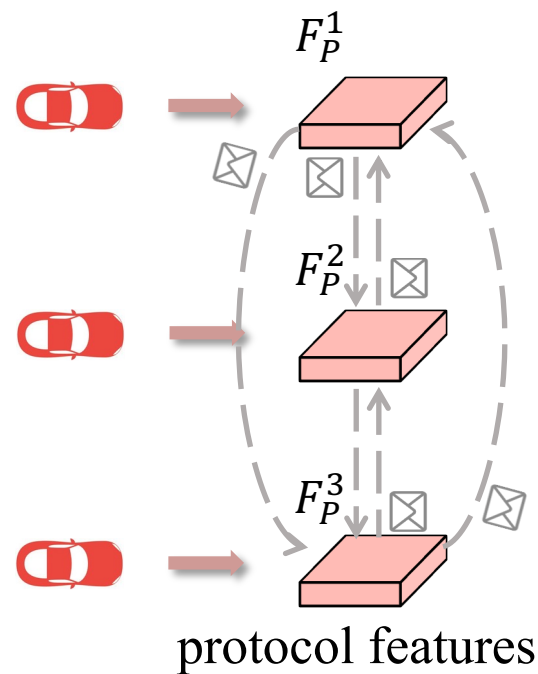


(III) After CFA (heterogeneously collaborative)

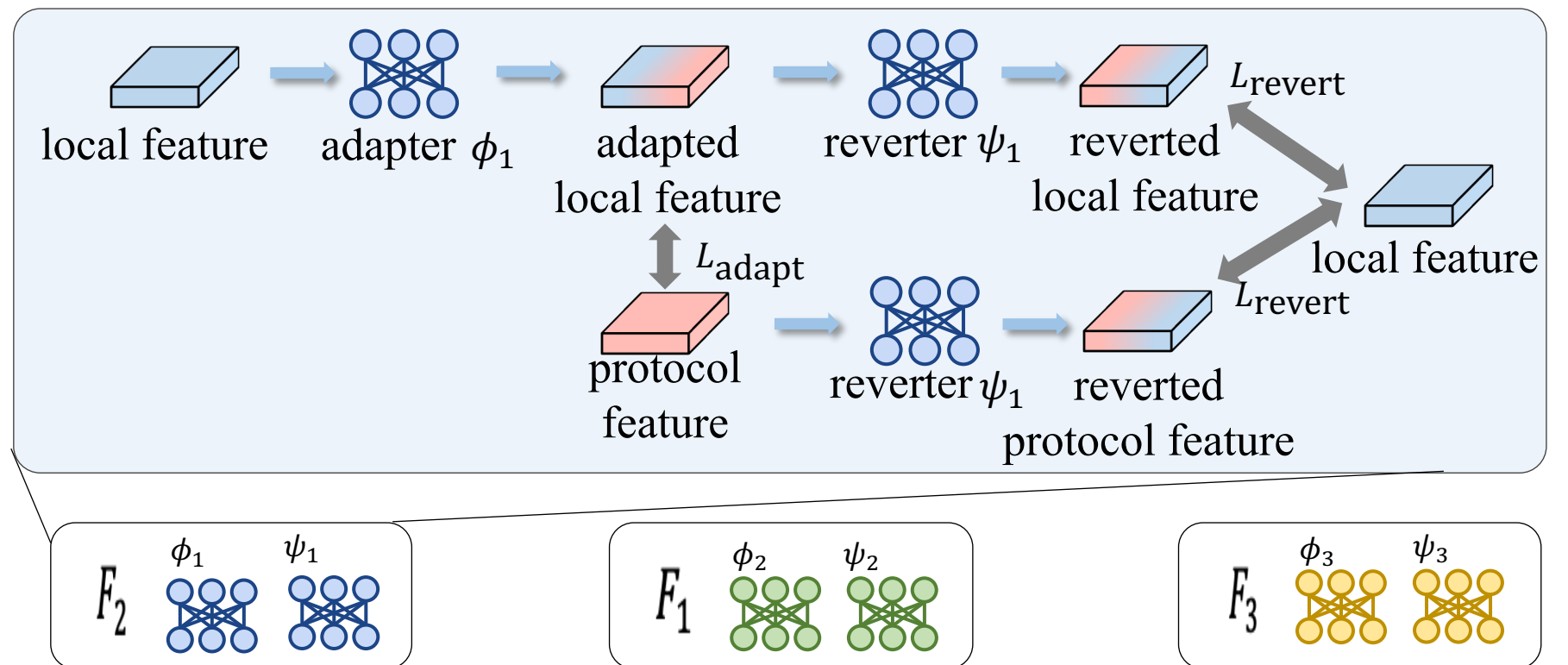


(II) Collaborative Feature Alignment (CFA)

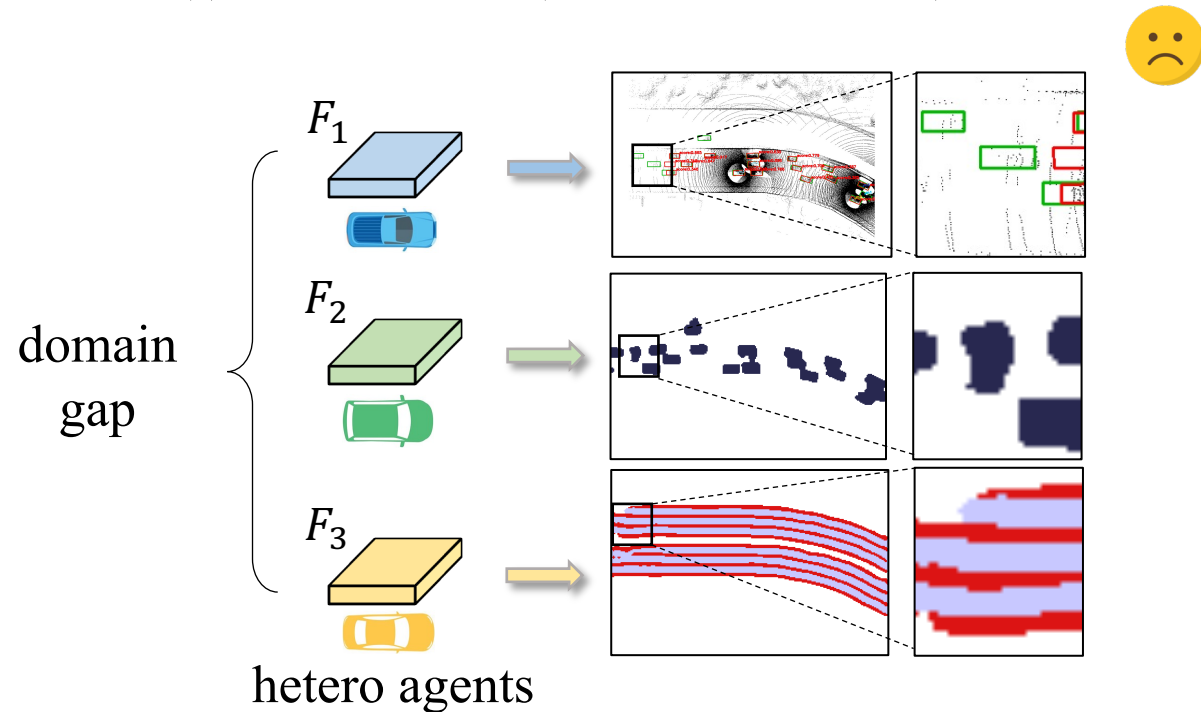
Step 1: Training Protocol Network



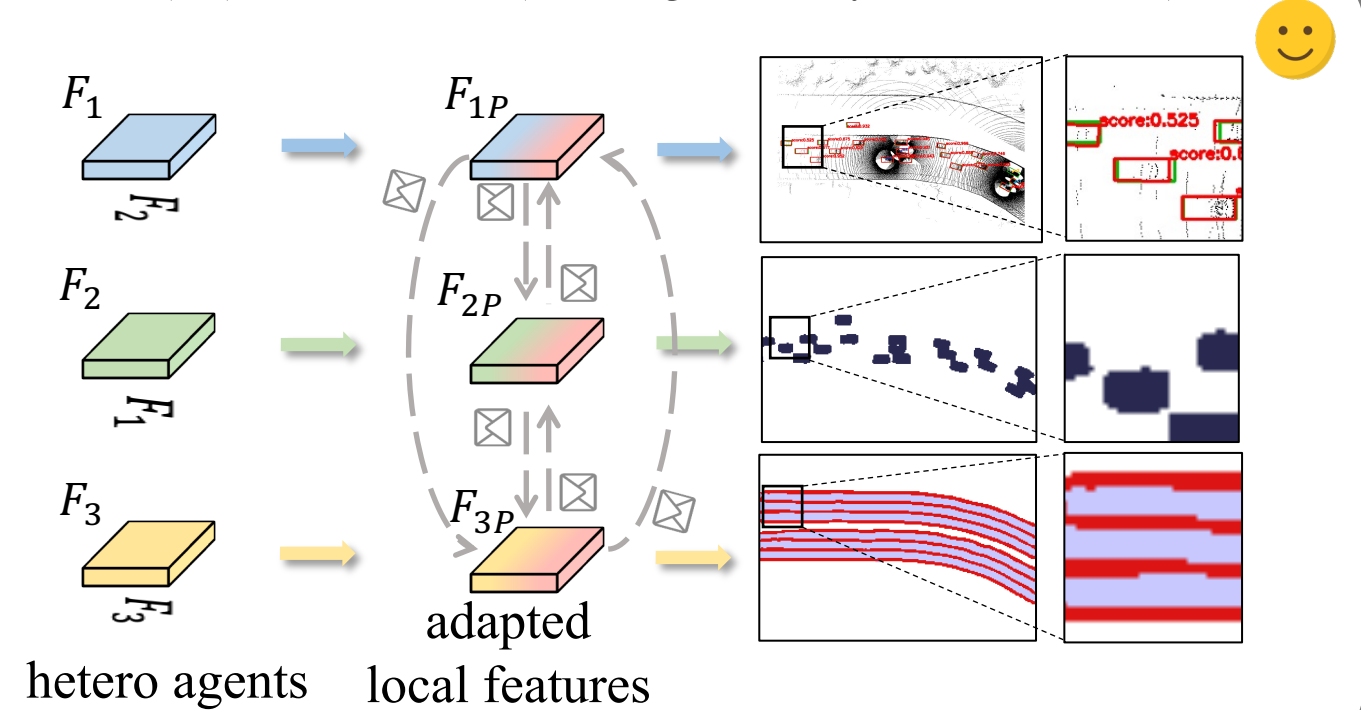
Step 2: Training Local Adapters and Reverters



(I) Before CFA (Non-collaborative)

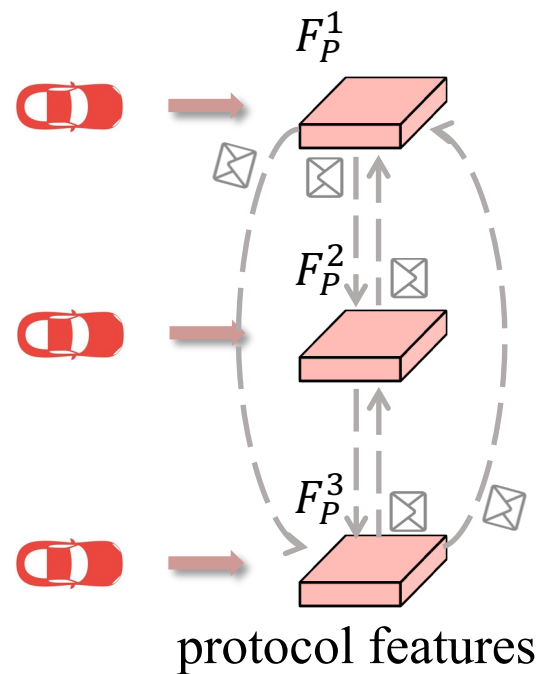


(III) After CFA (heterogeneously collaborative)

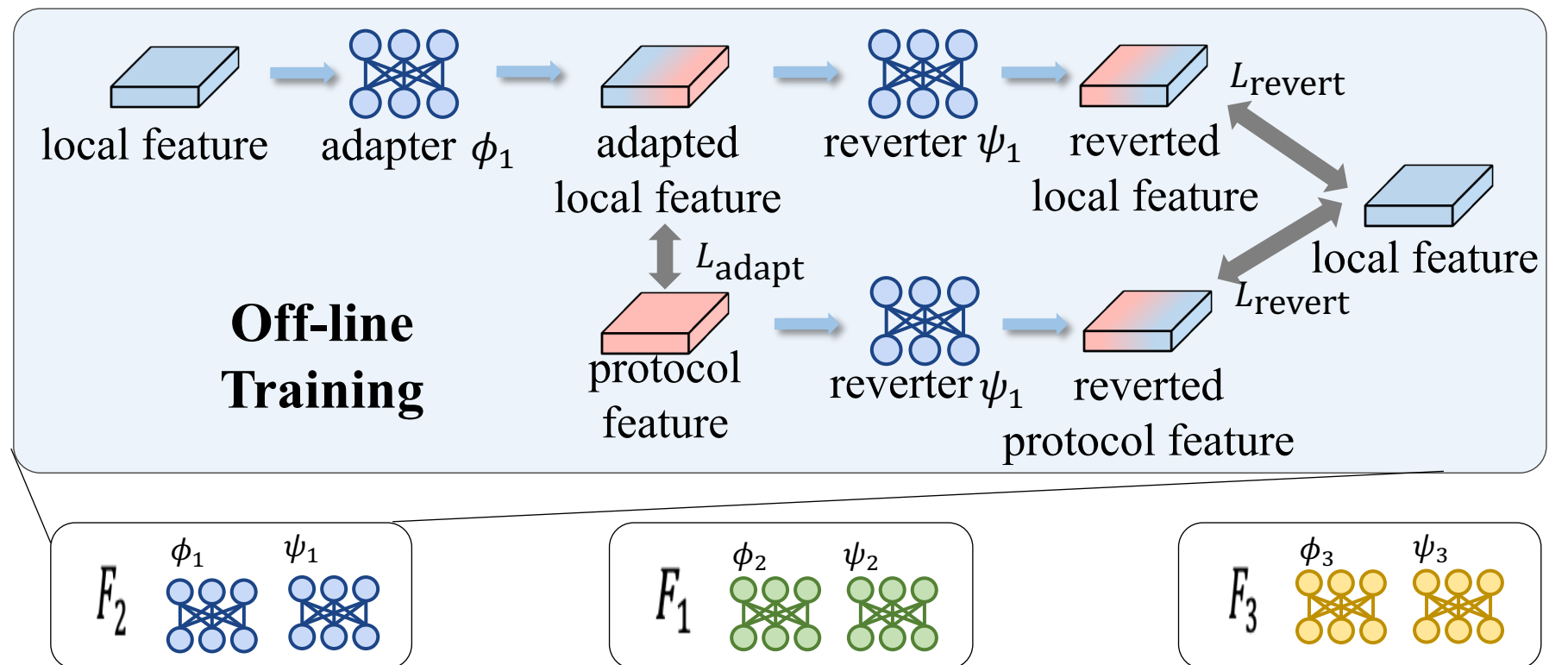


(II) Collaborative Feature Alignment (CFA)

Step 1: Training Protocol Network

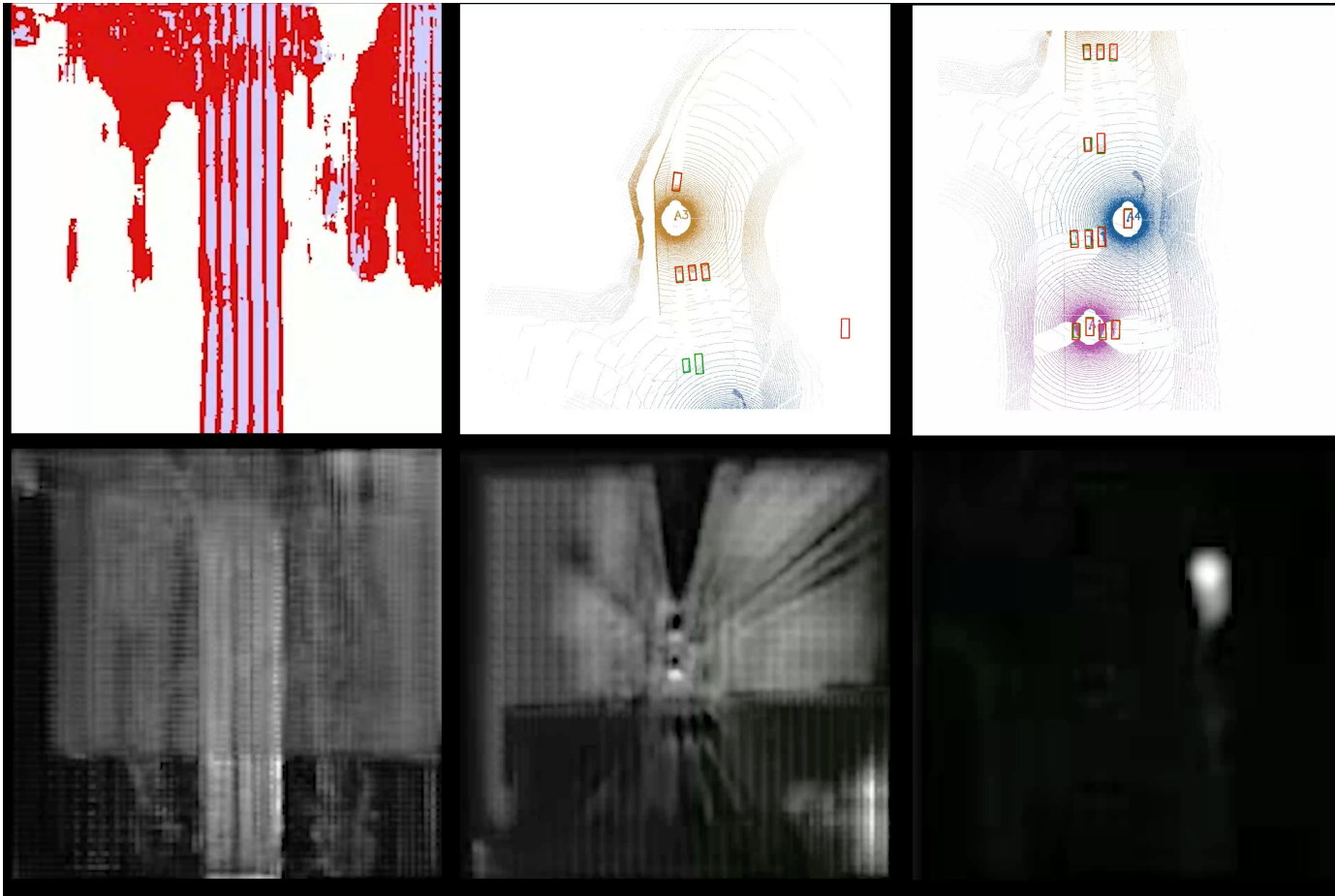


Step 2: Training Local Adapters and Reverters



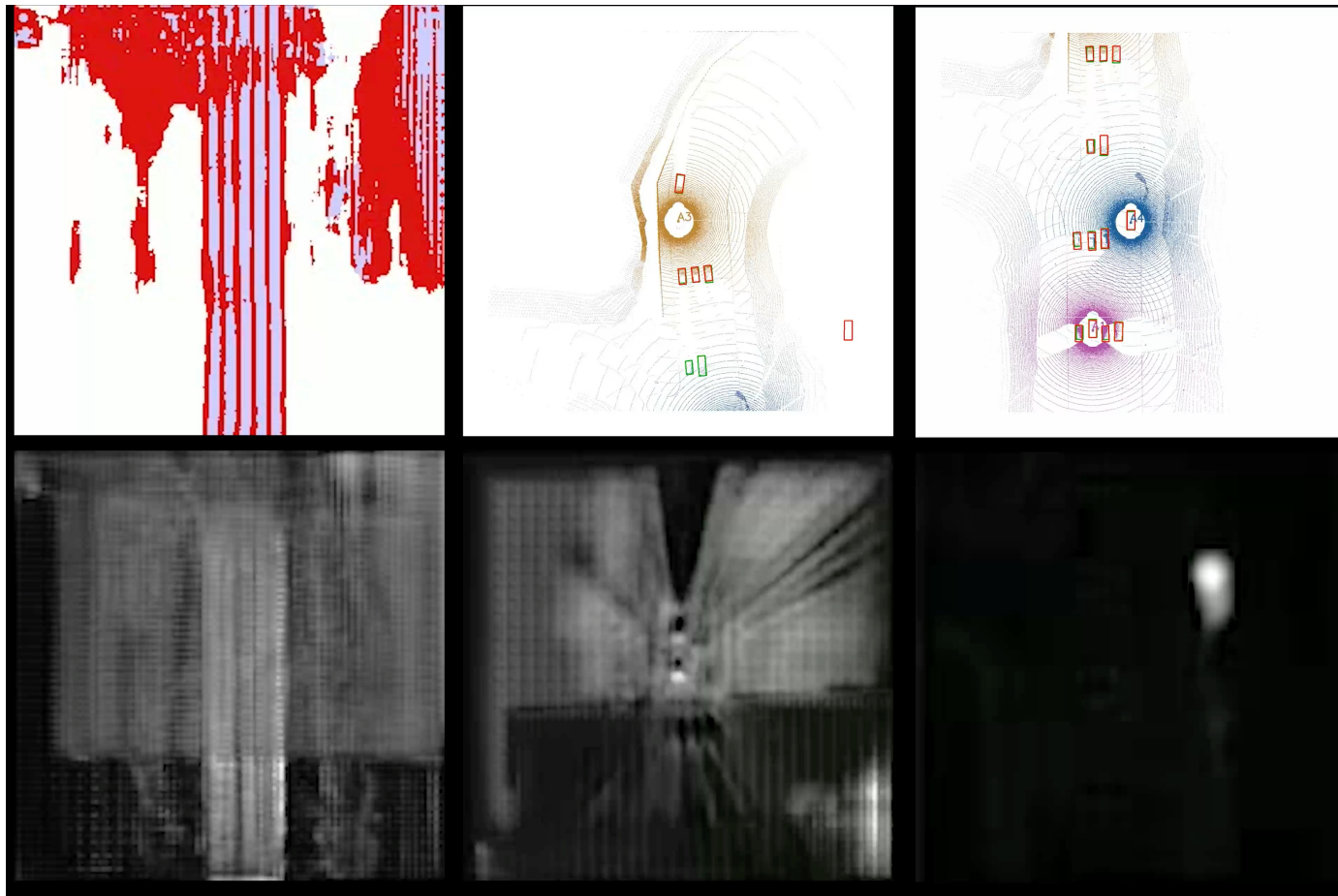
Visualization

Before CFA

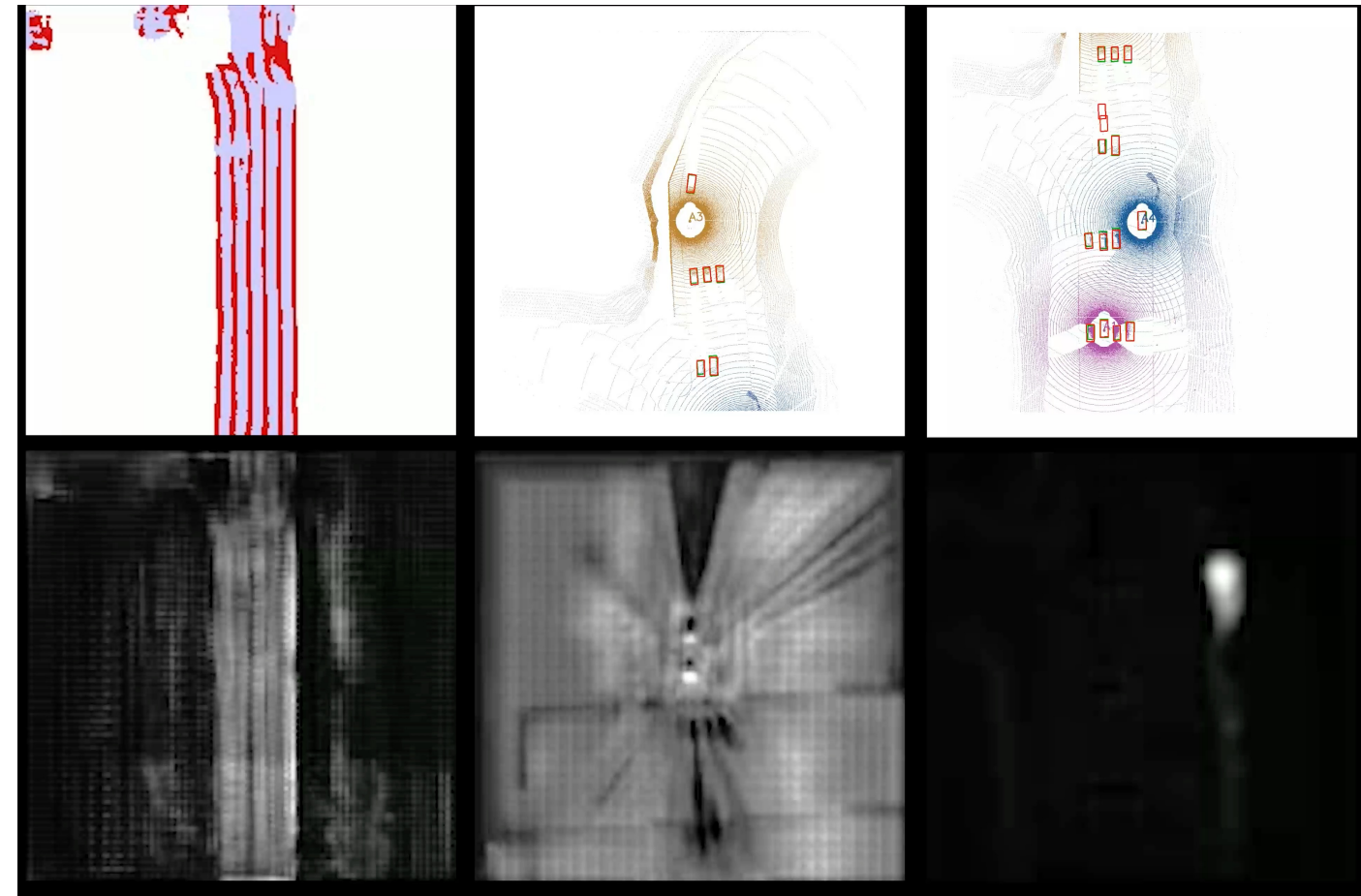


Visualization

Before CFA



After CFA



Efficiency

