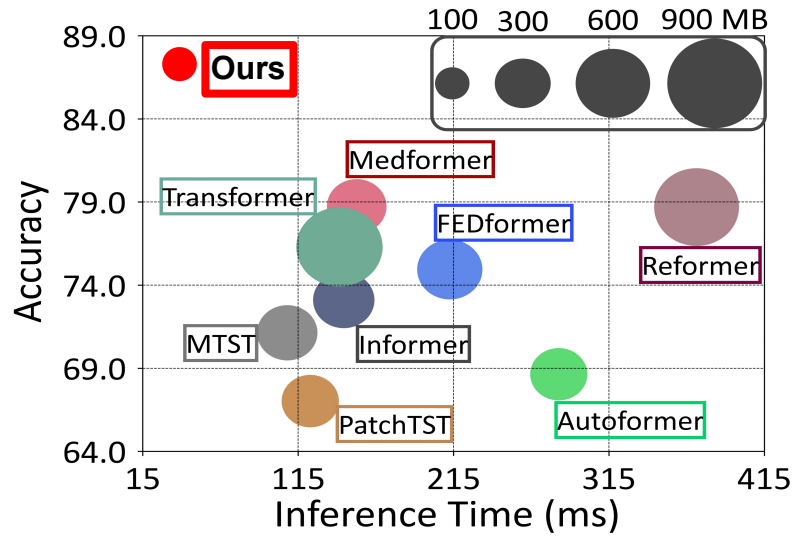
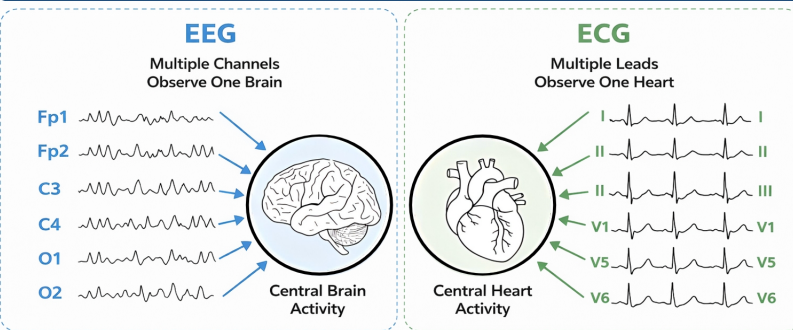


## 1. Highlights

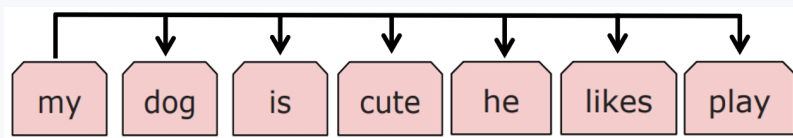


**+12.13% Improvement**  
**33% Memory Usage**  
**20% Inference Time**

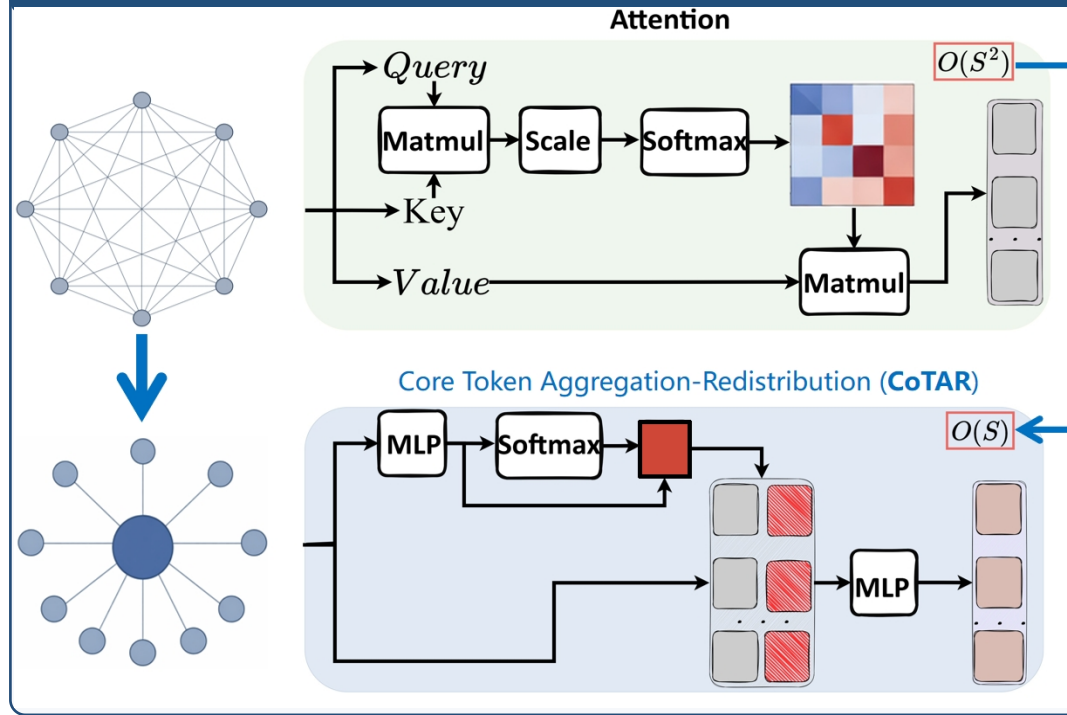
## 2. Motivation



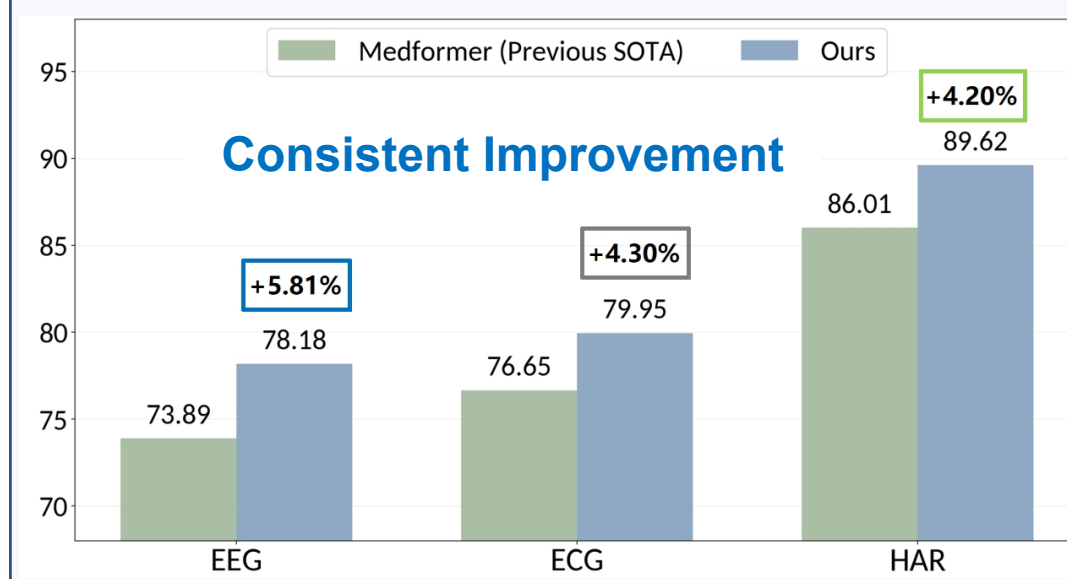
### Decentralized Attention vs. Centralized Signals



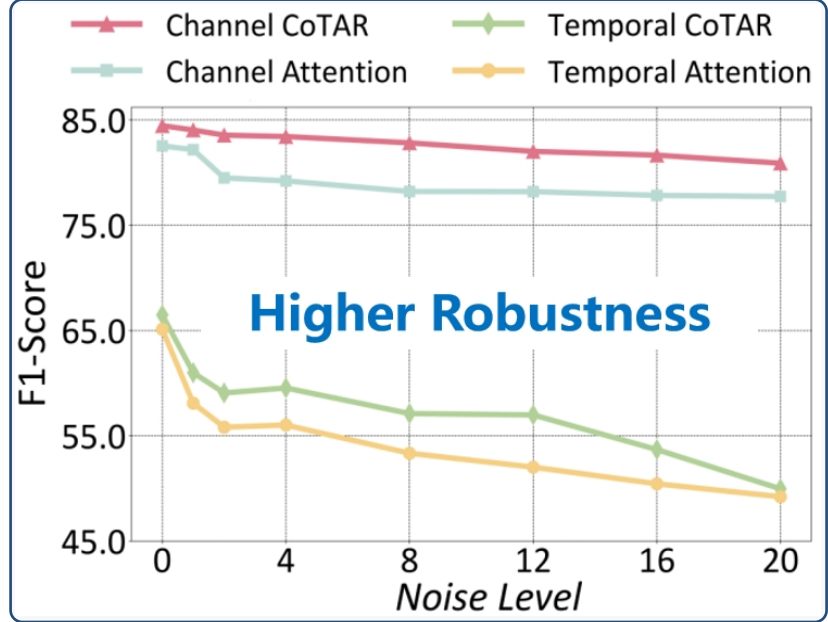
## 3. Solution



## 4. Results



### Consistent Improvement



### Higher Robustness

## 5. Takeaways

1. Inductive bias over brute-force complexity
2. Structure-aligned MedTS foundation model
3. Modalities governed by a centralized structures, fNIRS, fMRI, HAR, etc.

## 6. Resources

OpenReview



arXiv



Code

