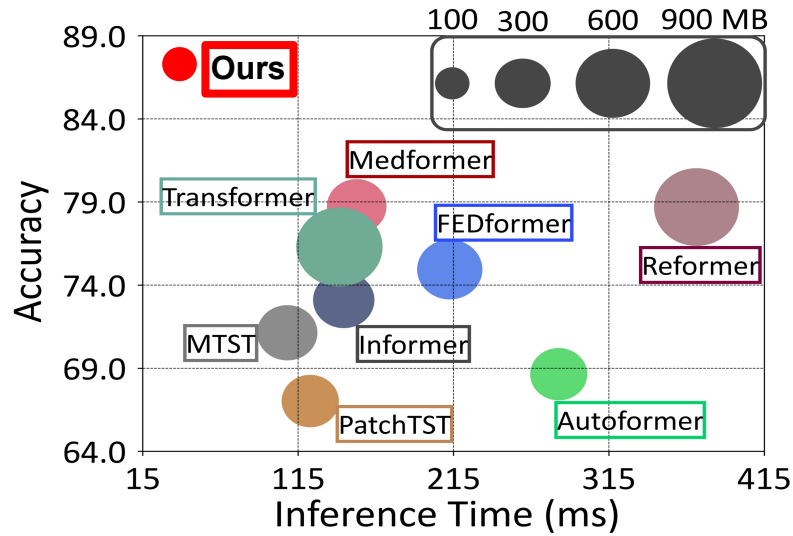
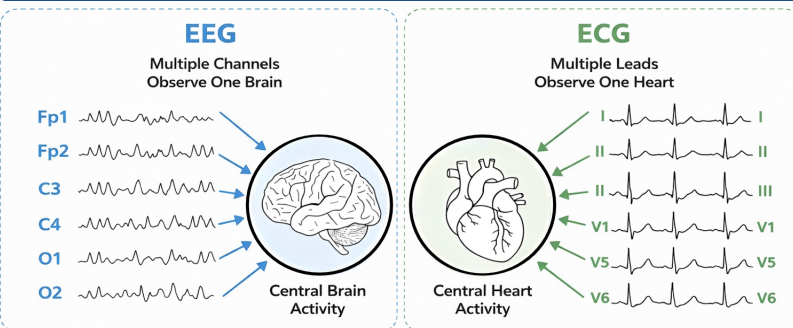


1. Highlights

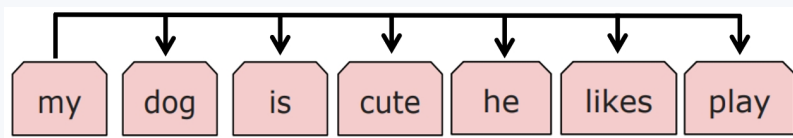


+10.3% Improvement
33% Memory Usage
20% Inference Time

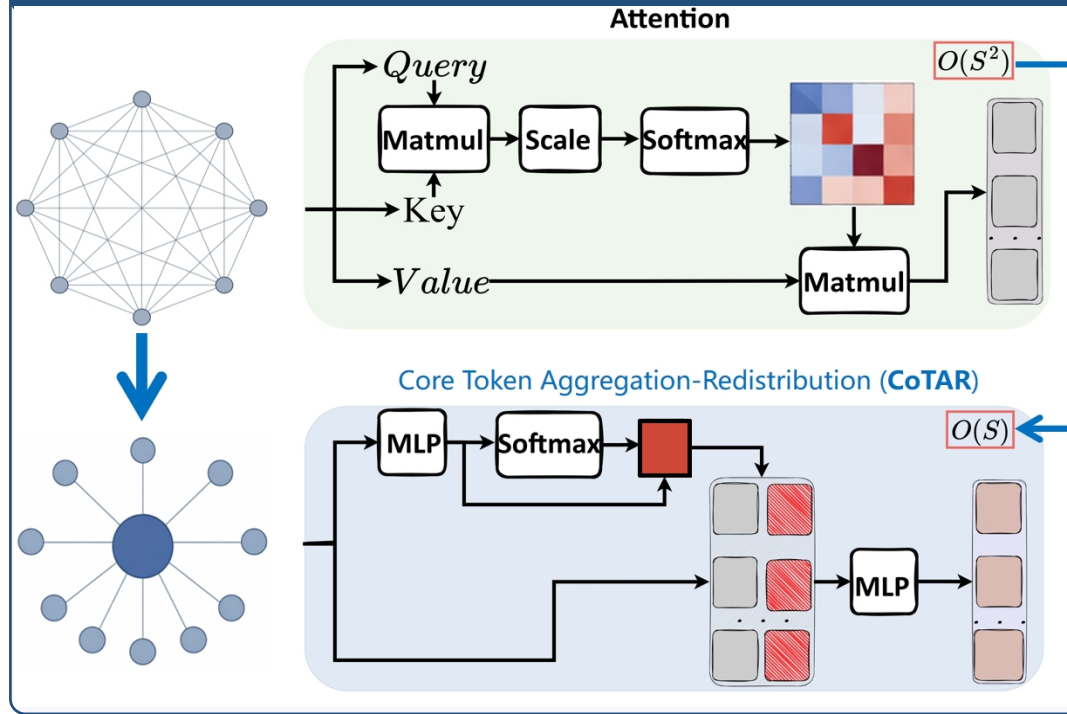
2. Motivation



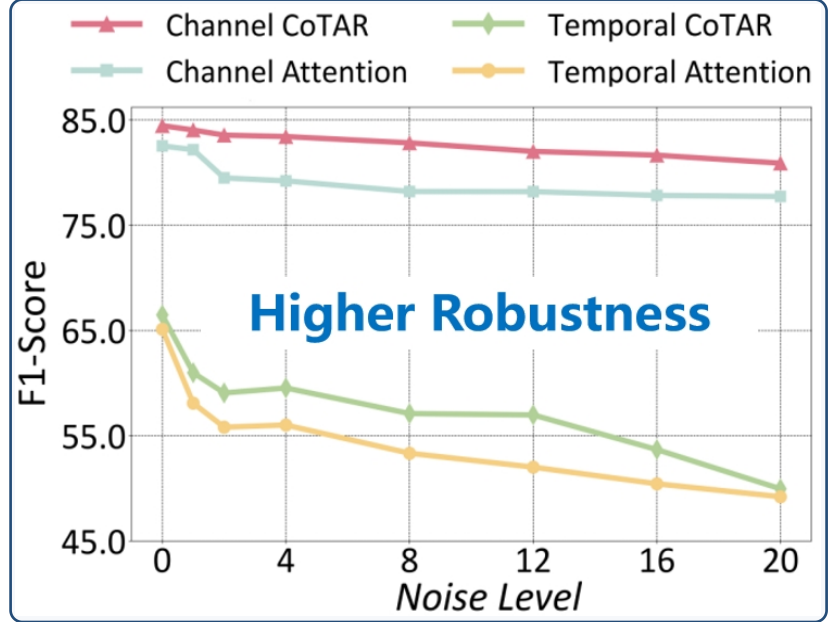
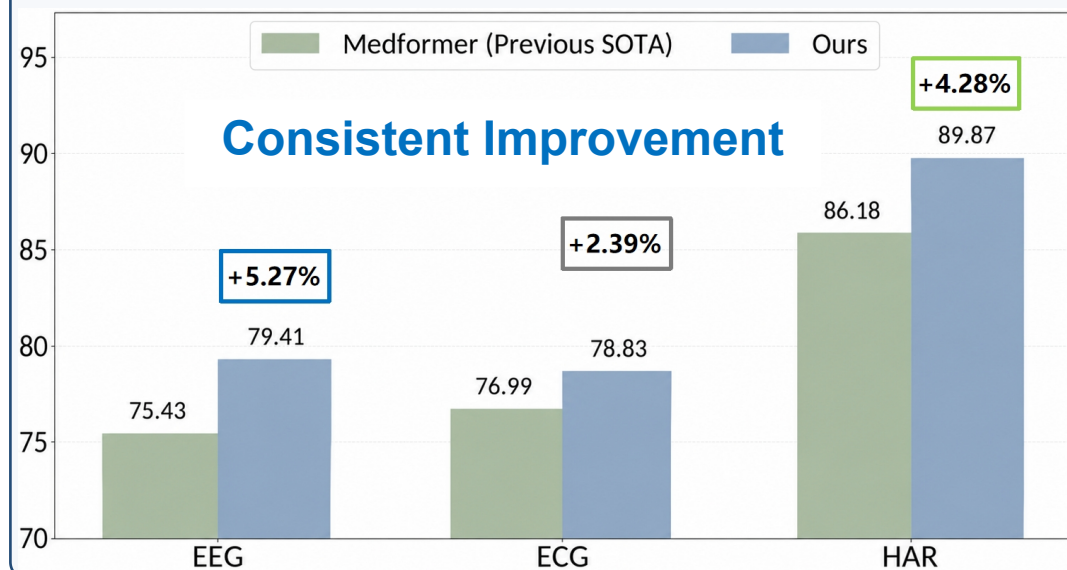
Decentralized Attention vs. Centralized Signals



3. Solution



4. Results



5. Takeaways

1. Inductive bias over brute-force complexity
2. Structure-aligned MedTS foundation model
3. Modalities governed by a centralized structures, fNIRS, fMRI, HAR, etc.

6. Resources

OpenReview



arXiv



Code

